

Tower Crane



鼎联国际集团



UNIONLEVER INTERNATIONAL GROUP

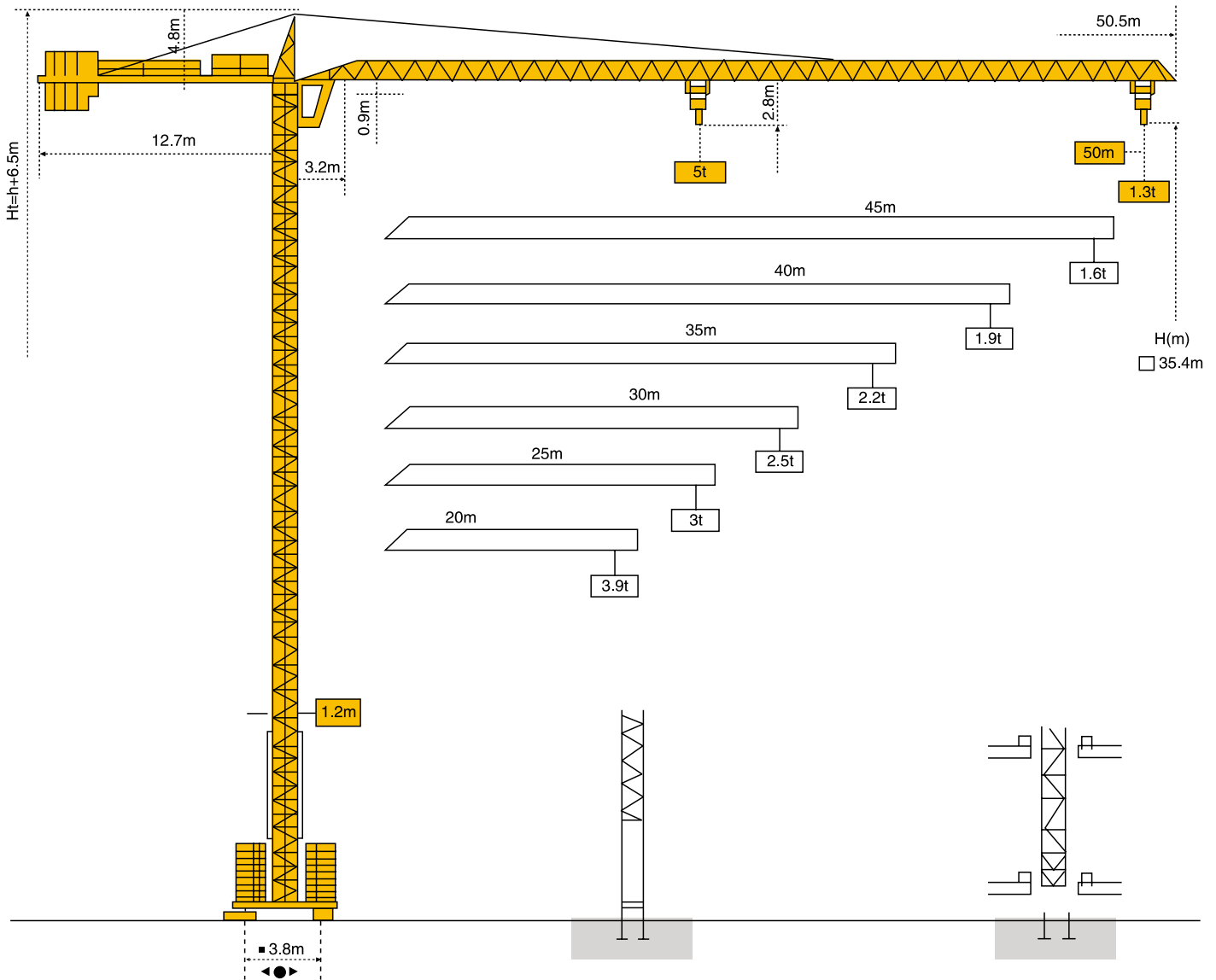
2012

Tower Crane



● TC5013 (MC80)

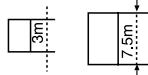
MAST SECTION: S24C



Tower Crane

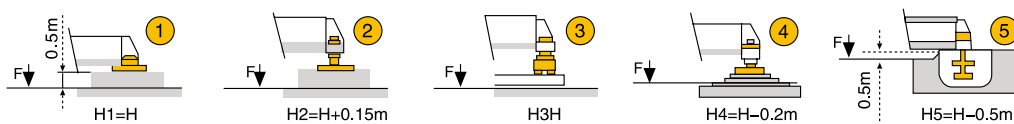
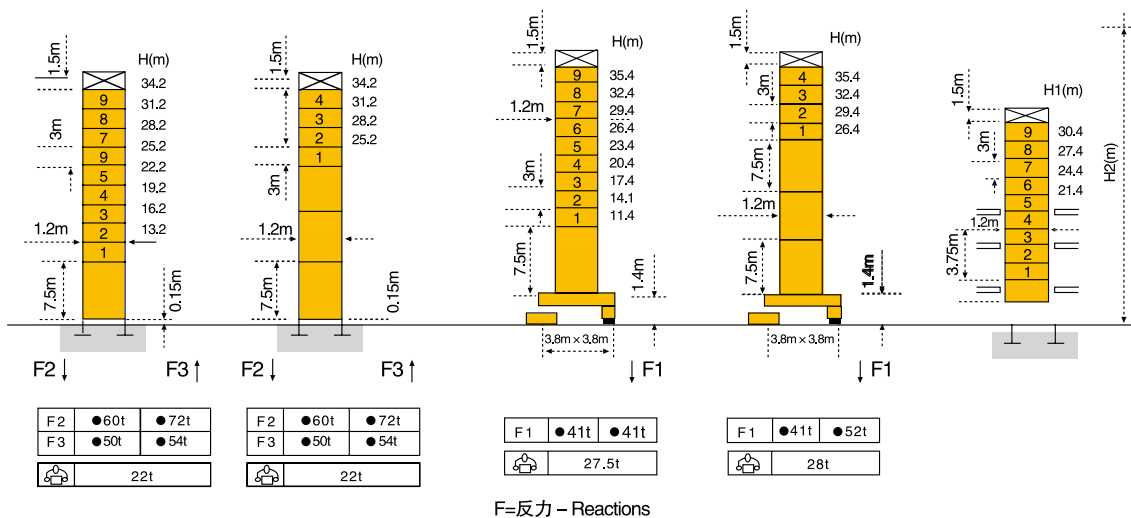
TC5013

标准节 - Masts

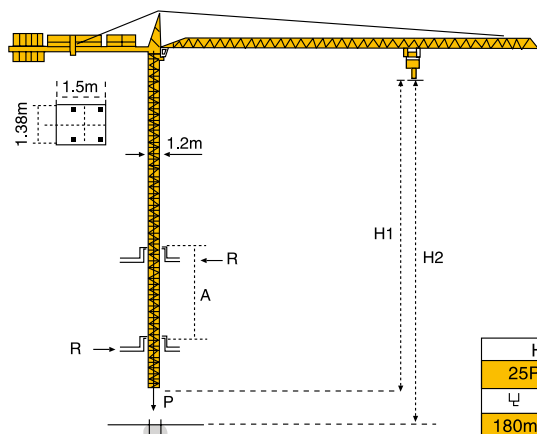


1.2m

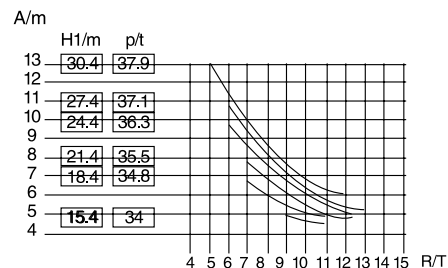
起重臂 - Jib
20m → 50m



楼板上顶升 - Climbing crane

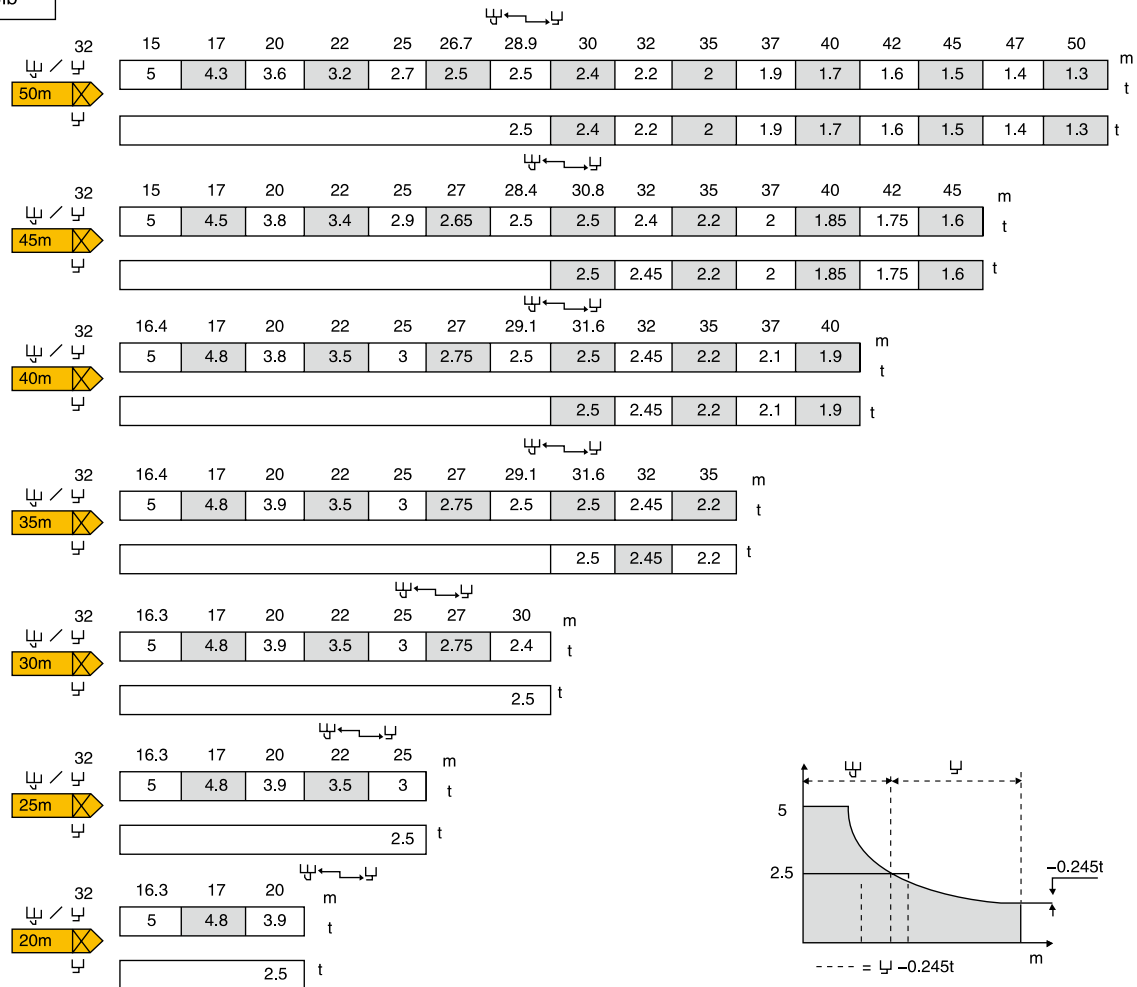


H2	
25PC 13	
180m	90m

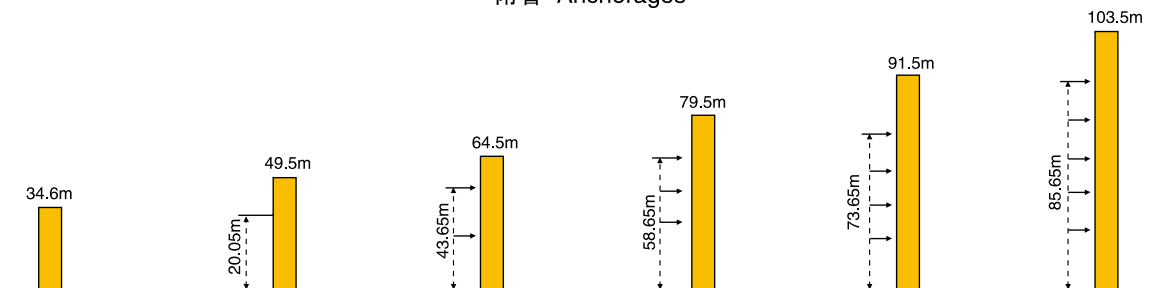


起重臂
Floche
Jib

负荷曲线-Load diagrams



附着-Anchorage



· 工作状态
· 非工作状态

☁ 空载, 无配重
起重臂和高度均为最大值







· In service
· Out of service

☁ With out load and
ballast with longest jib
and maximum height

TC5013

Tower Crane

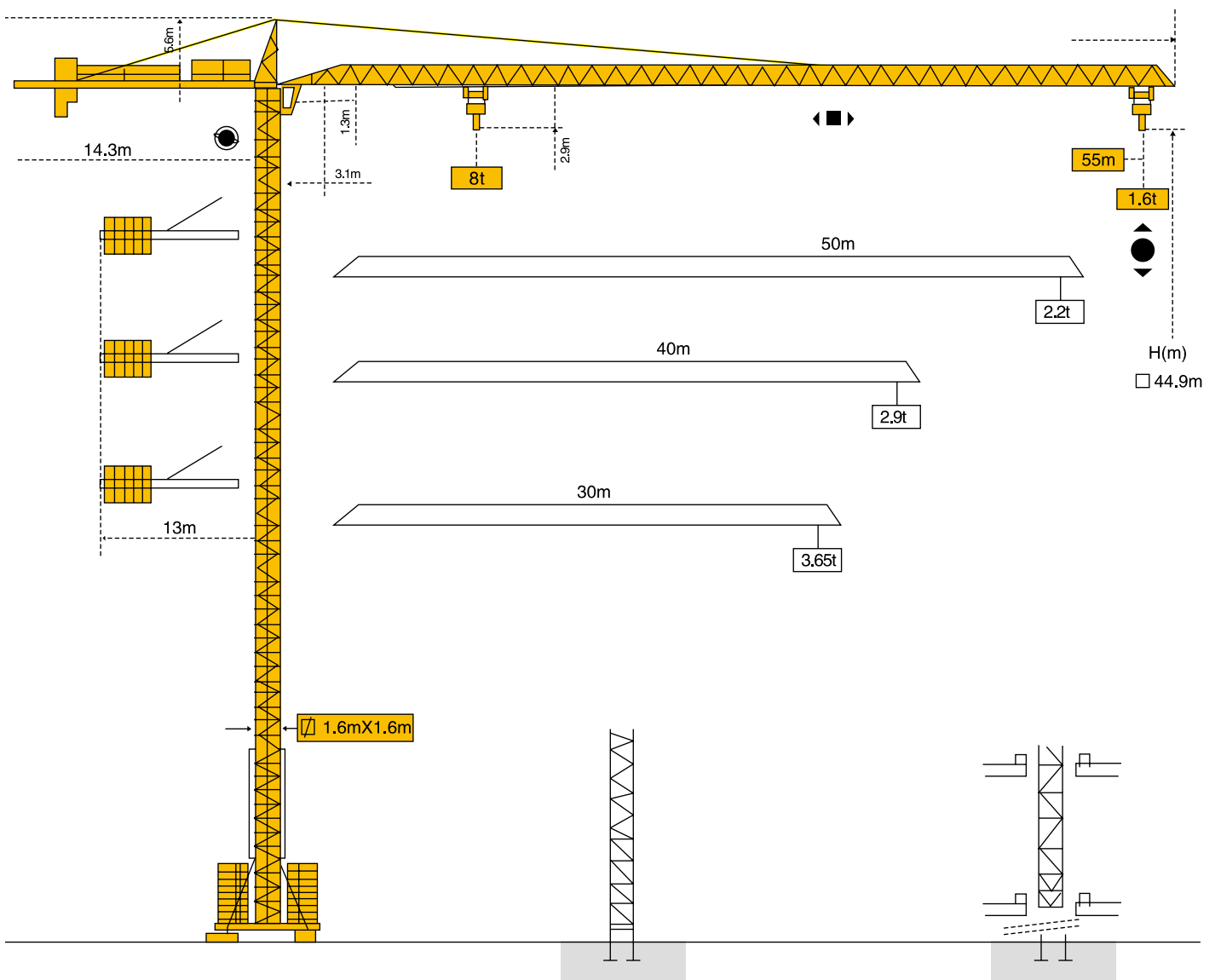
机构-Mechanisms

			m/min	t	m/min	t		ch-PS hp	kw
起升 Hoisting	 5t	25PC13	6.8	2.6	3.4	5			
			32	2.6	16	5	360m	25	18.5
			64	1.3	32	2.6			
变幅 Trolleying		4D3V3			15 ↓ 58			4	3
回转 Slewing		RCV60			0-0.8 tr/min rpm			8	6
行走 Travelling		TVD 324			26			2X4	2X2.9
行走 Travelling		RT 224			25			2X4	2X2.9
电网-Mains supply			400V(+6%-10%)50Hz						
所需功率-Necessary electric power			25PC: 35KVA						
发电机组-Generator set			84/534-87/405						

*请问我方咨询-Consult us

● TC5516 (MC115)

MAST SECTION: L46A1



Tower Crane

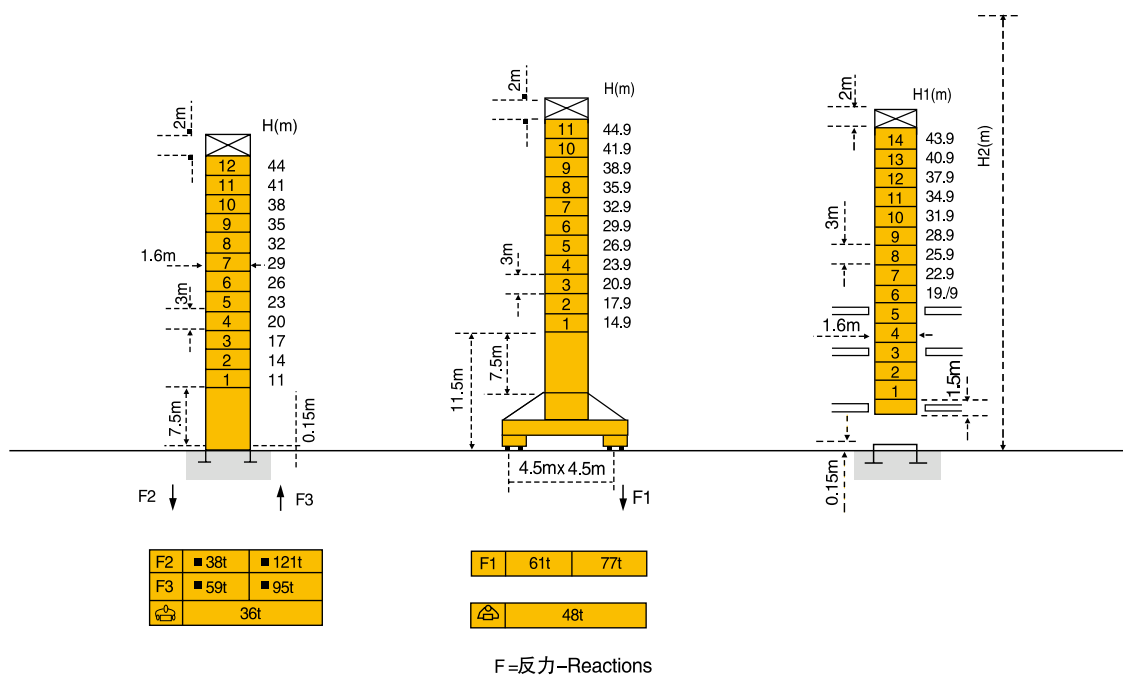
TC5516

节-Masts

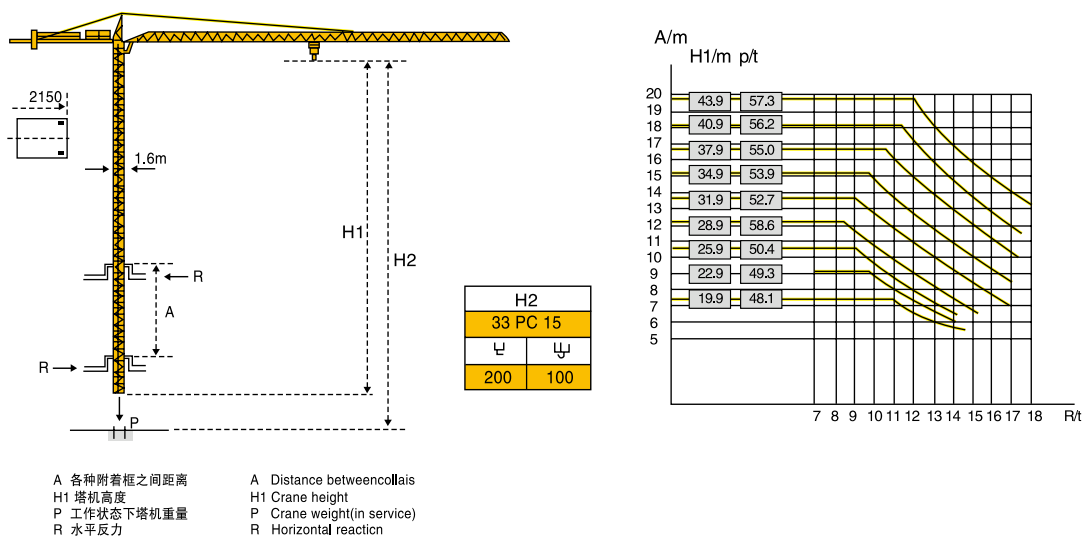


1.6m

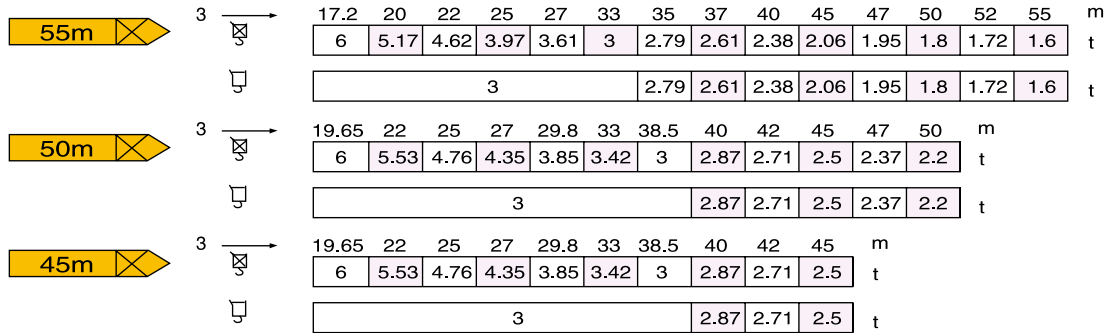
起重臂-Jib
30m → 55m



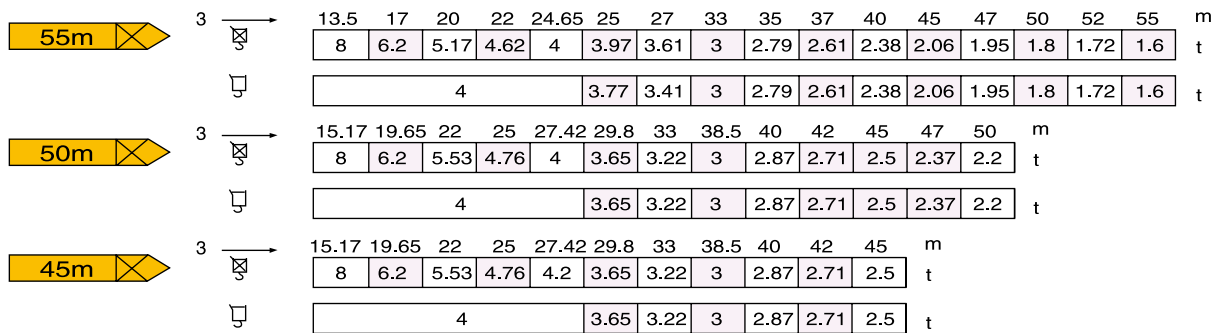
楼板上顶升-Climbing crane



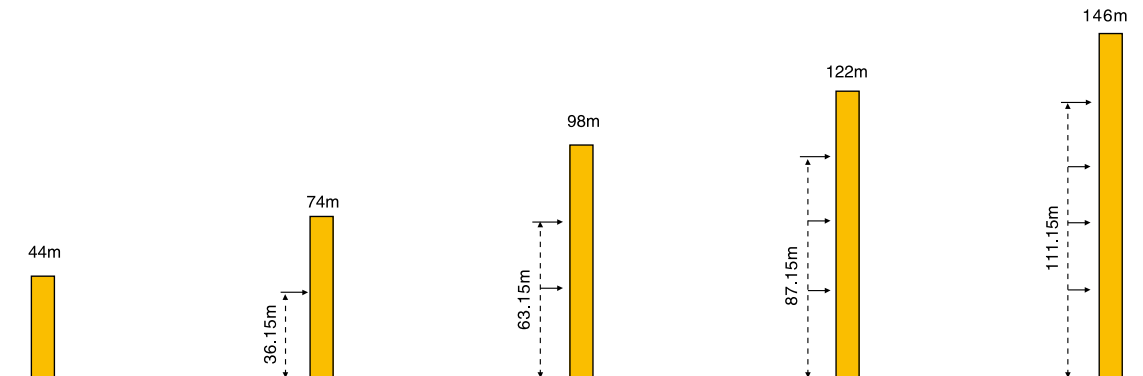
Courbes de charges - Lead diagrams (Hoisting 6T)



Courbes de charges - Lead diagrams (Hoisting 8T)



附着-Anchorage



· 工作状态
· 非工作状态

☁ 空载, 无配重
起重臂和高度均为最大值






· In service
· Out of service

☁ With out load and
ballast with longest jib
and maximum height

TC 5516

Tower Crane

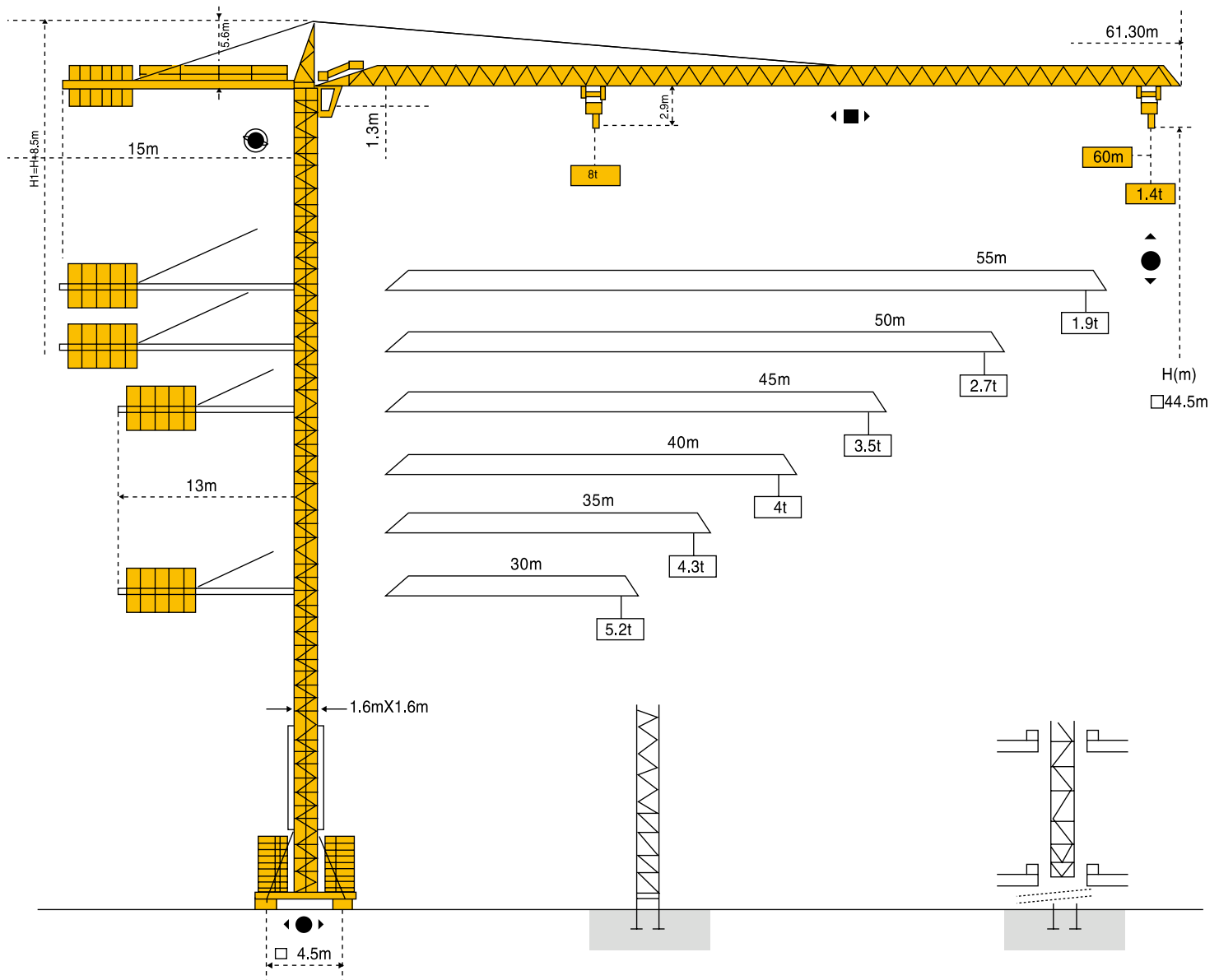
机构-Mechanisms

			m/min	t	m/min	t		ch-PS hp	kw
起升 Hoisting	 8t	24 PQ 20W	7.7	3	3.8	6	400m	33	24
			36	3	18	6			
			72	1.5	36	3			
变幅 Trolleying		4D3V3			15-58			4	3
回转 Slewing		RCV 95			0-0.8 tr/min rpm			2 × 6	2 × 4.4
行走 Travelling	SB 16A  R ≥ 10m	RT 324			12.5-25			2 × 7	2 × 5.2
电网-Mains supply			CEI 38 IEC 38		400V(+6%-10%)50Hz				
所需功率-Necessary electric power					33PC: 50KVA				
发电机组-Generator set									

* 请问我方咨询-Consult us

● TC6014 (MC175)

MAST SECTION: L46A1



Tower Crane

TC6014

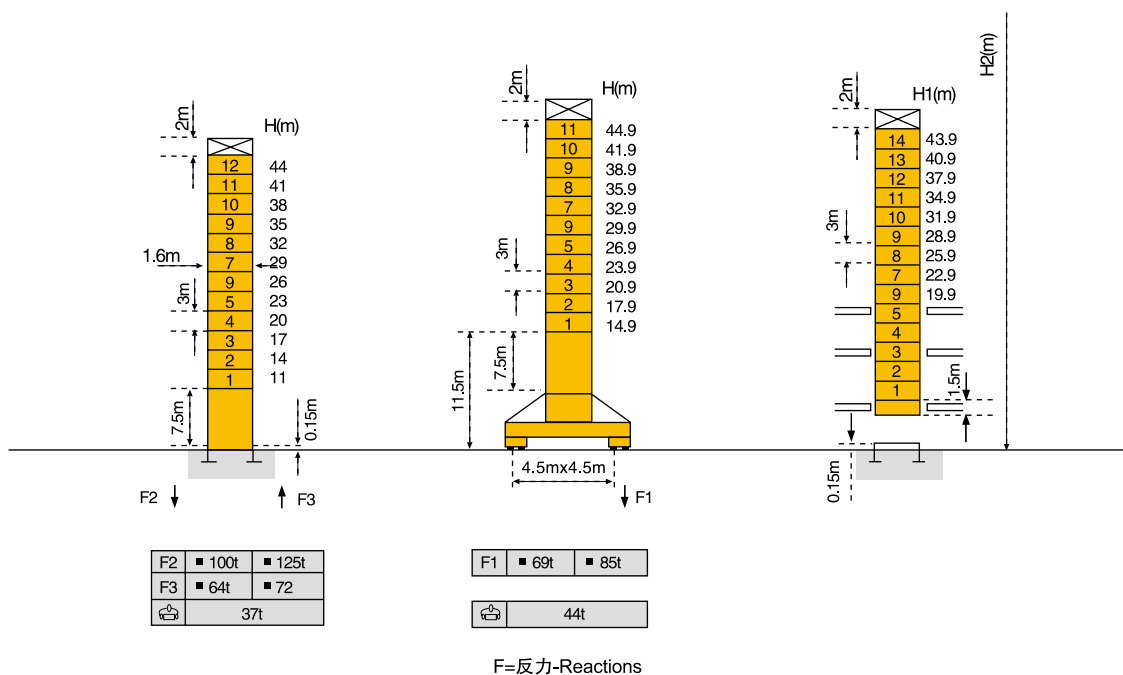
节-Masts



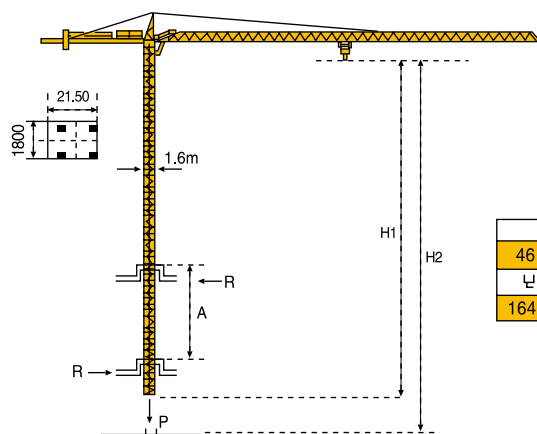
1.6m

起重臂-Jib

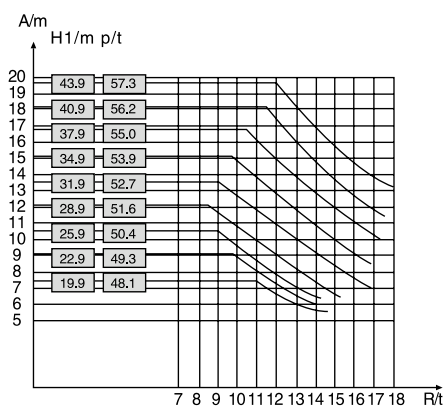
30m ≥ 60m



楼板上顶升-Climbing crane



H2	
46 RCB 20	
164M	82M

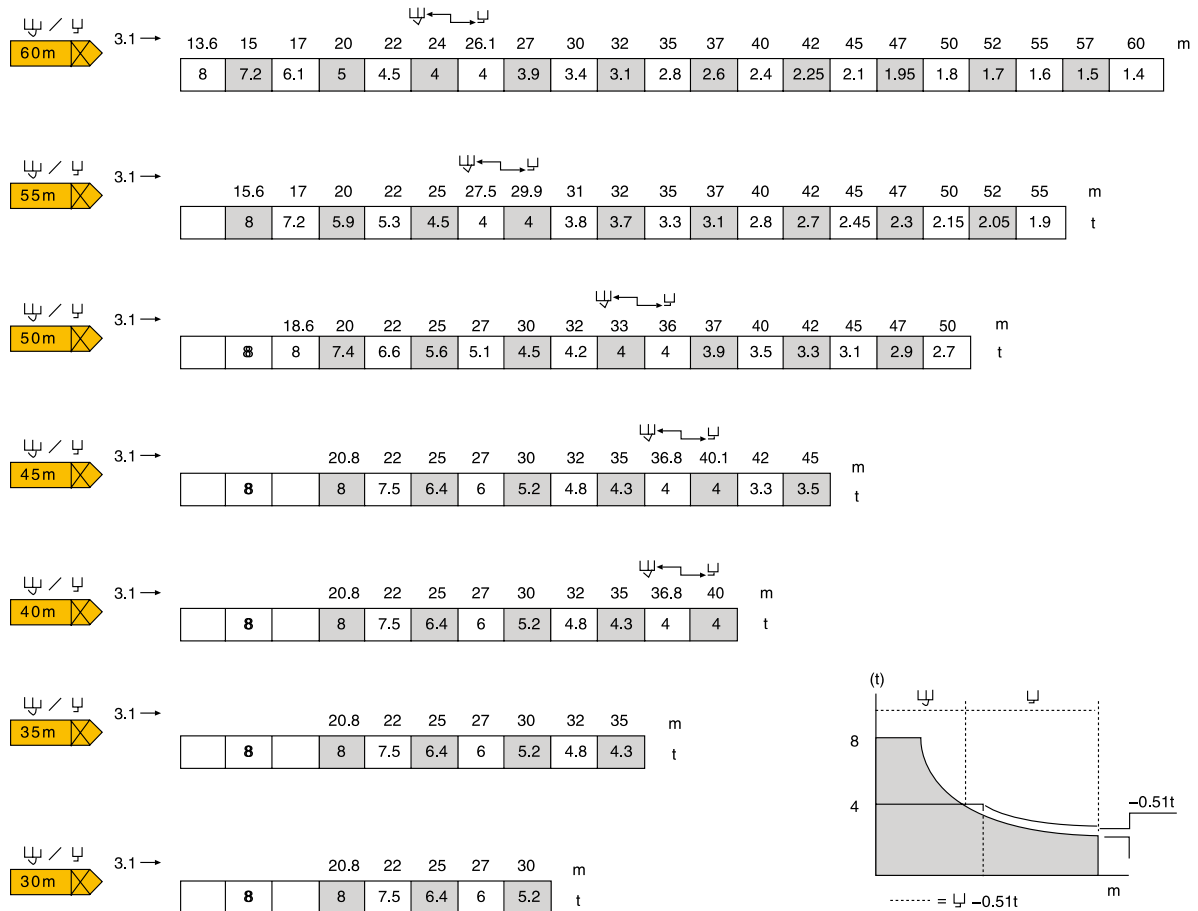


A 各种附着缸之间距离
H1 塔机高度
P 工作状态下降机重量
R 水平反力

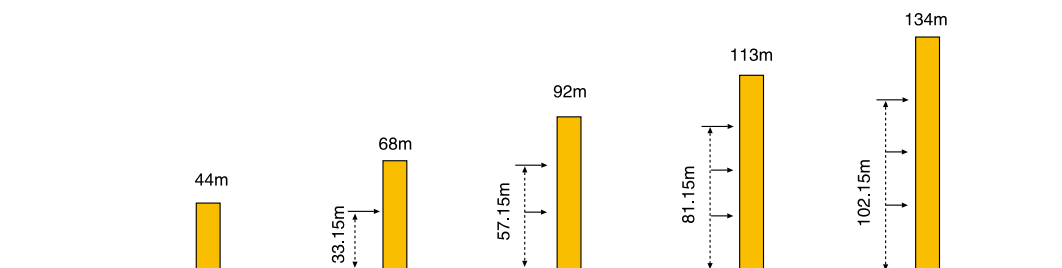
A Distance between collars
H1 Crane height
P Crane weight(in service)
R Horizontal reaction

起重臂
Jib

负荷曲线 – Load diagrams




附着 – Anchorages



- 工作状态
- 非工作状态









- 空载，无配重
其重臂和高度均为最大值

- In service
- Out of service

-  With out load and
tallast weith longest jb
and ms.ximum height

Tower Crane

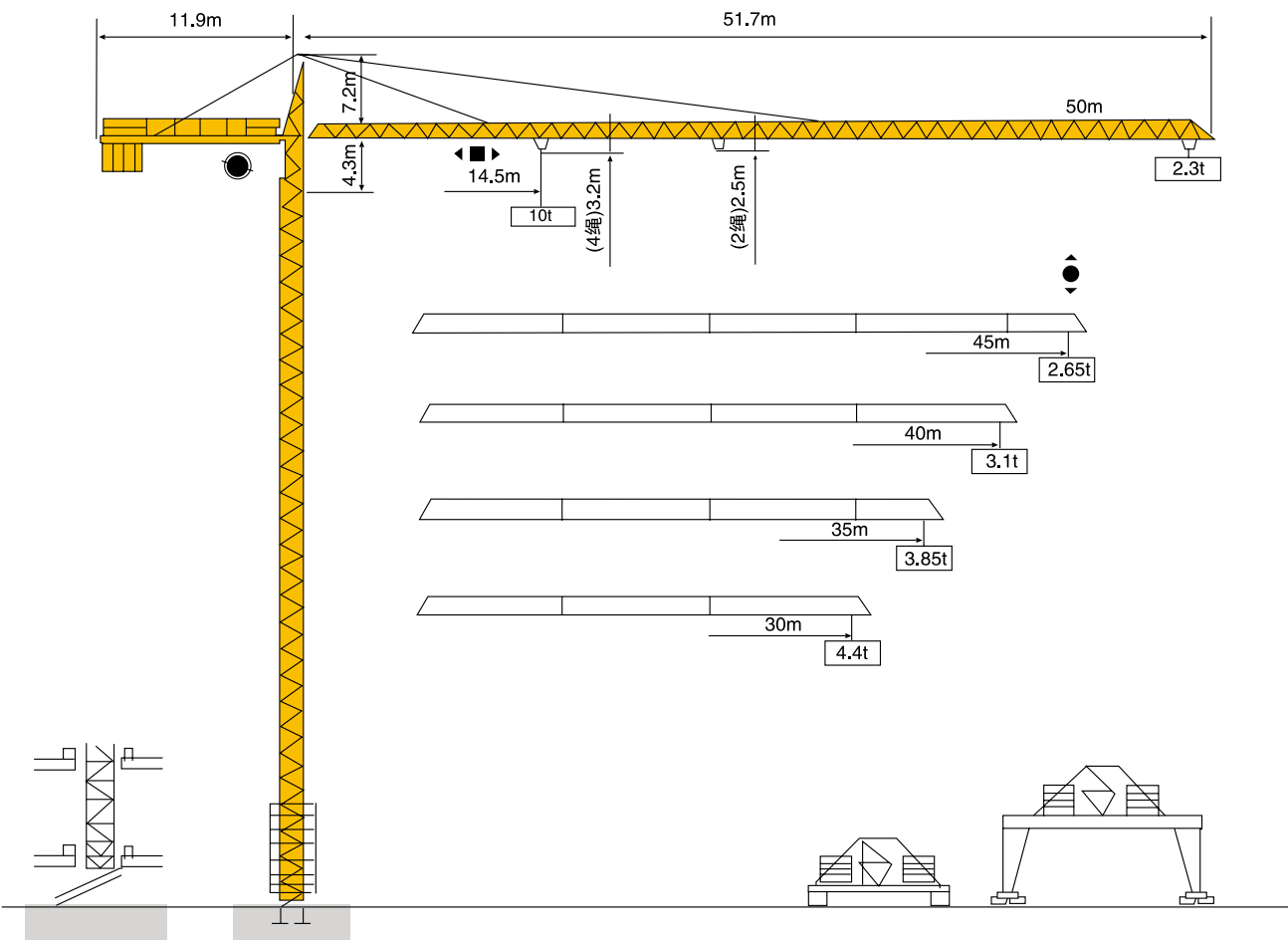
机构 – Mechanisms

			m/min	t	m/min	t		ch-PS hp	kw
起升 Holsting									
		45 RCS 20	0-39.5 0-7.9	4 2	0-19.7 0-39.5	8 4	329m	45	33
变幅 Trolleying		5D3 V4			15-58			5	3.7
回转 Slewing		RCV 145			0-0.8 tr/min rpm			2X6	2X4.4
行走 Travelling	SB 16A  R ≥ 10m	RT 324			12.5-25			2X7	2X5.2
电网 – Mains supply			CEI 38 IEC 38		400V(+6%-10%)50Hz				
所需功率 – Necessary electric power					45RCS: 75KVA				
发电机组 – Generator set									

* 请问我方咨询 – Consult us

● TC5023 (F0/23B)

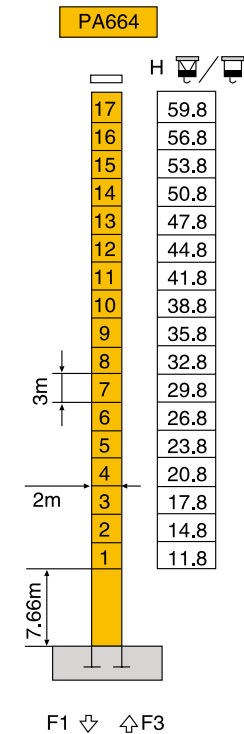
MAST SECTION: L68A1/L46A1



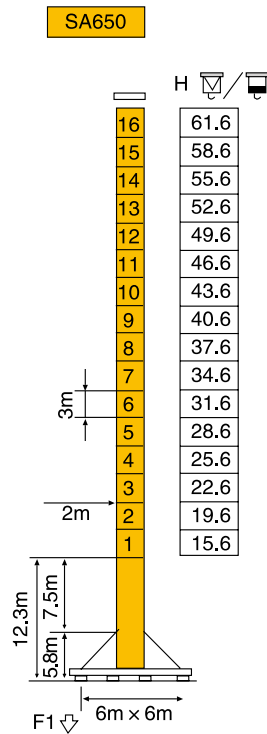
F 反力 Reactions	• 工作状态	In service	自重 self-load	不带载荷及配重， 最大臂长及标准 高度时的自重。	Without load and counter-weight With longest jib and standard height.
	• 非工作状态	Out of service			

Tower Crane

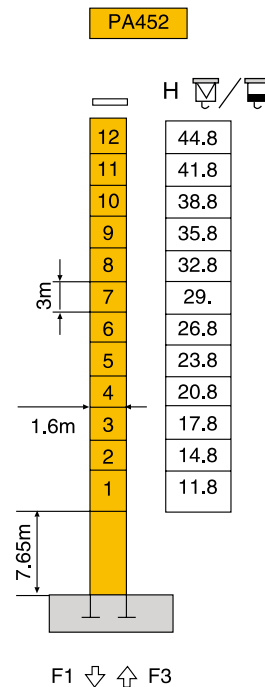
塔身截面 Mast:2m × 2m



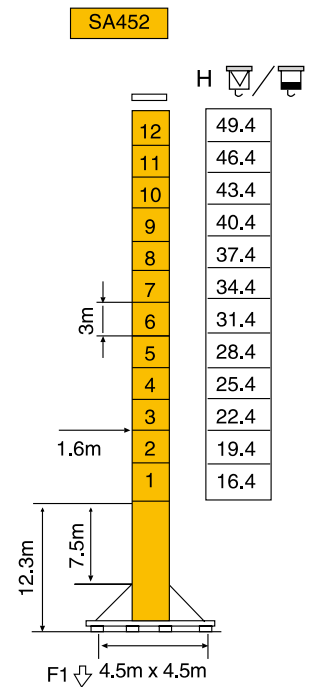
F2	• 108t • 192t
F3	• 68t • 157t
⊞	58t



F1	• 86t • 122t
⊞	69t

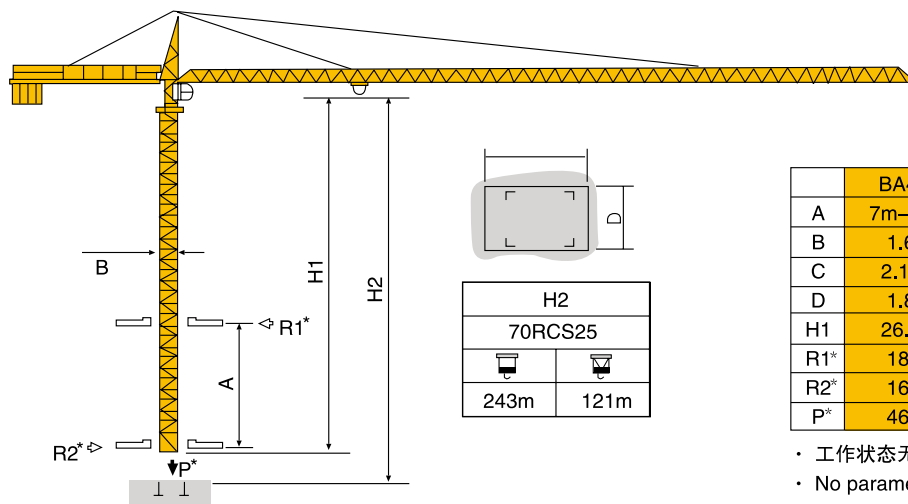


F2	• 98t • 118t
F3	• 66t • 92t
⊞	41t



F1	• 70t • 89t
⊞	50t

内爬塔机 Climbing crane

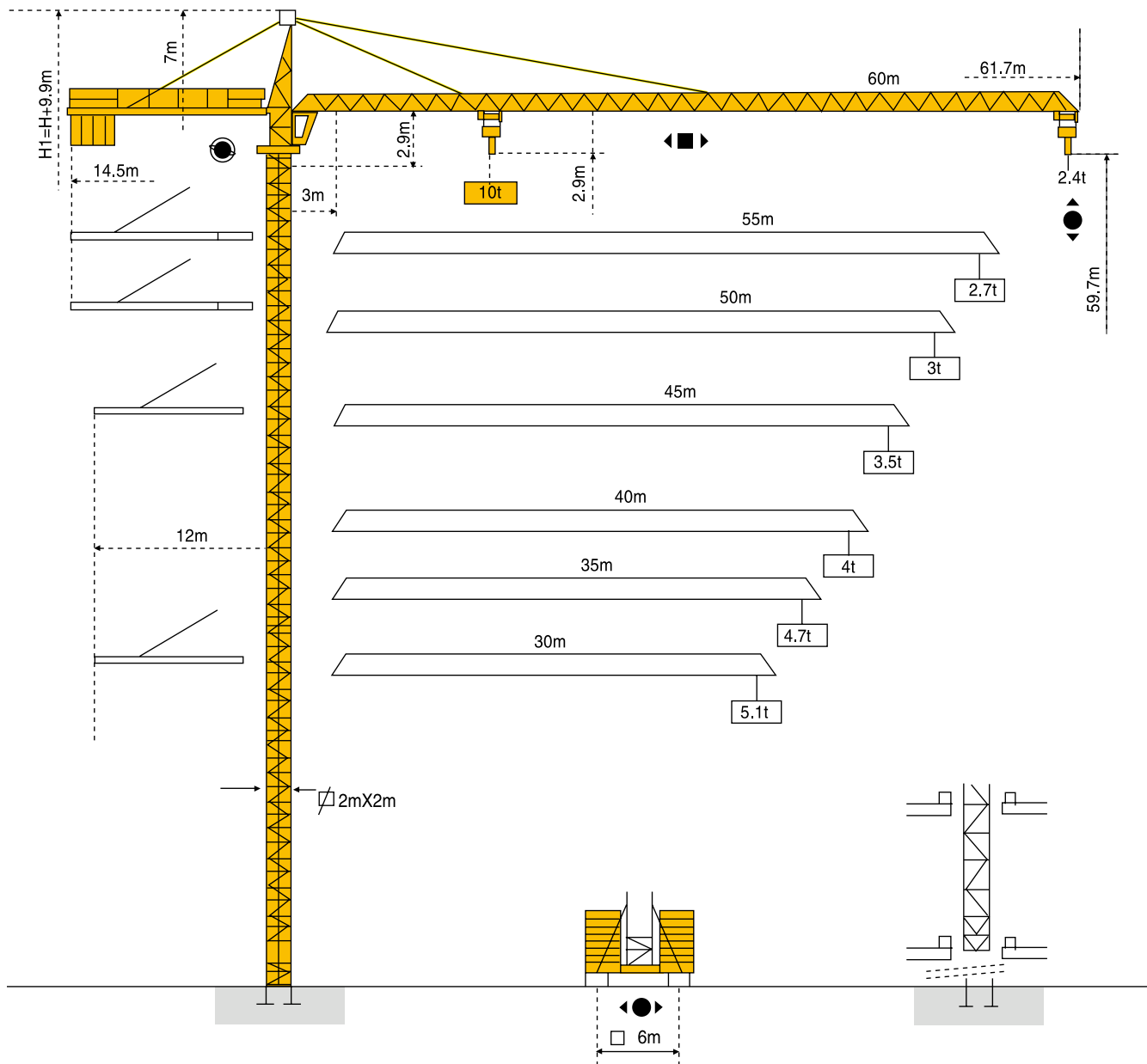


	BA476	BA479	BA675
A	7m-11m	12m-19m	16m-21m
B	1.6m	1.6m	2m
C	2.15m	2.31m	2.58m
D	1.8m	1.77m	2.17m
H1	26.8m	43.3m	53.6m
R1*	18.4t	18.6t	27.9t-21t
R2*	16.5t	15.9t	4.7t-10.4t
P*	46.7t	63.2t	75t

- 工作状态无系数
- No parameter in working service

● TC6024 (MC205)

MAST SECTION: L66A2



Tower Crane

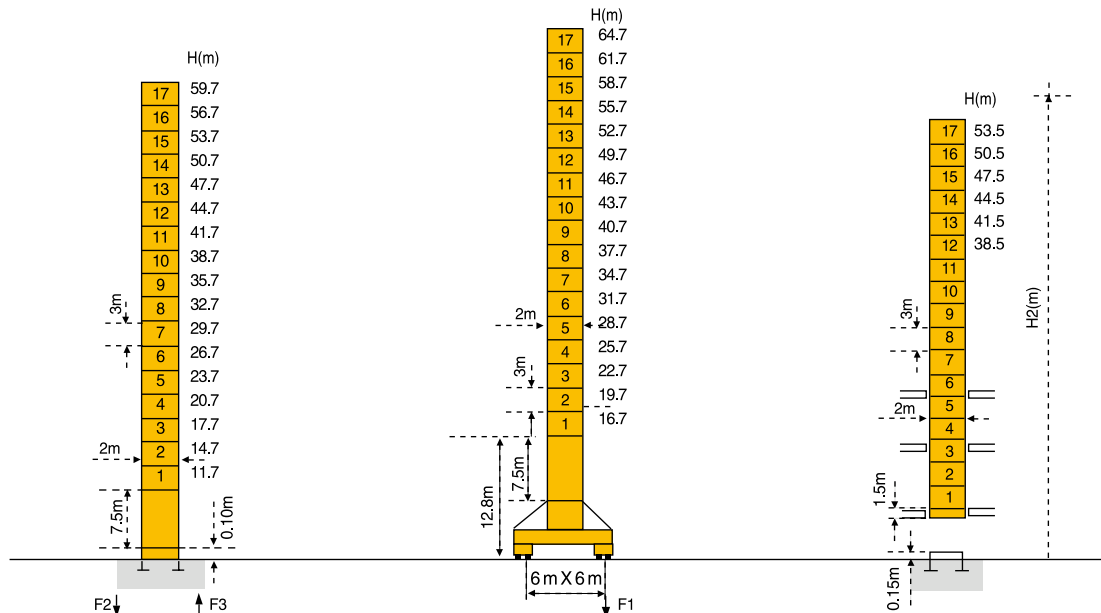
TC6024

节-Masts



2m

起重臂-Jib
30m → 60m



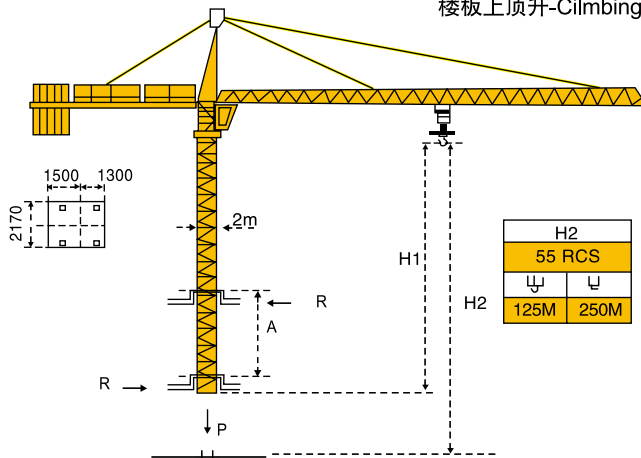
F2	126t	189t
F3	82t	149t
	62t	

F1	94t	125t
	74t	

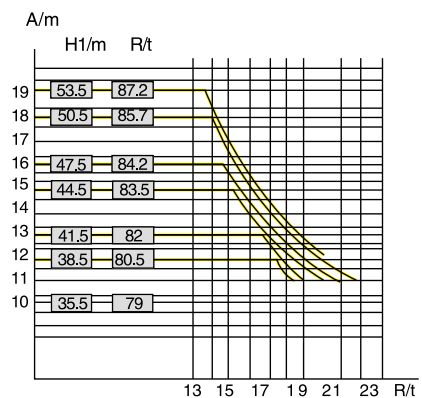
F=反力-Reactions

请问我方咨询
Consult us

楼板上顶升-Climbing crane



H2	
55	RCS
125M	250M

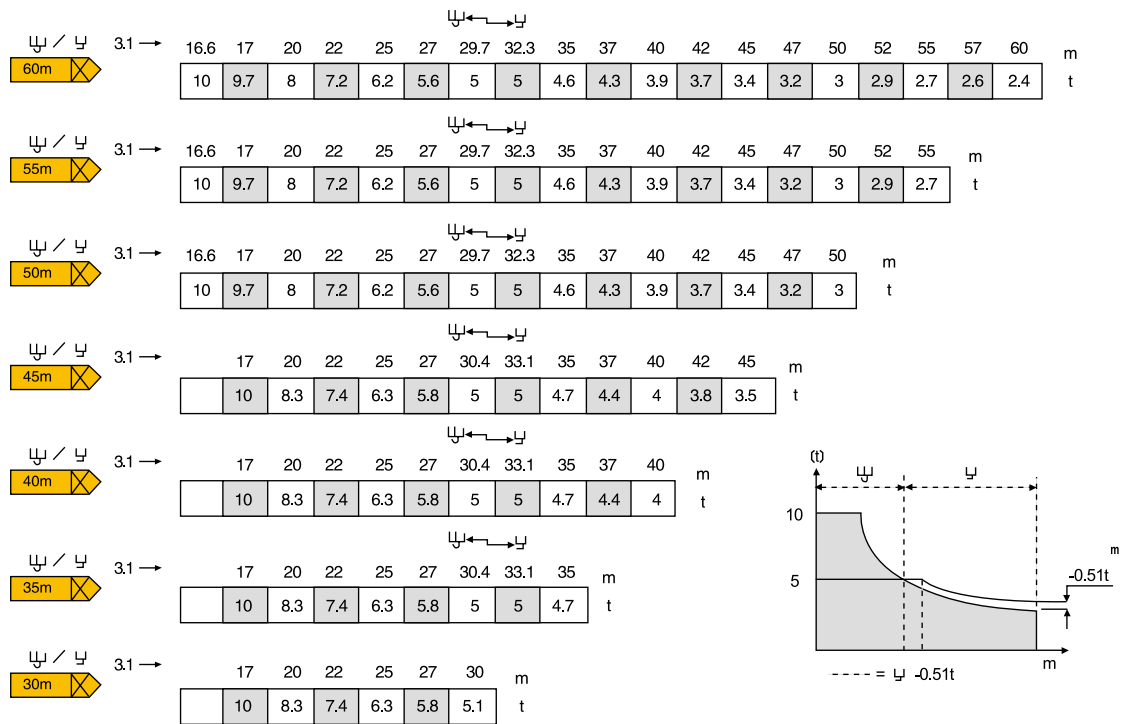


A 各种附着框之间距离
H1 塔机高度
P 工作状态塔机重量
R 水平反力

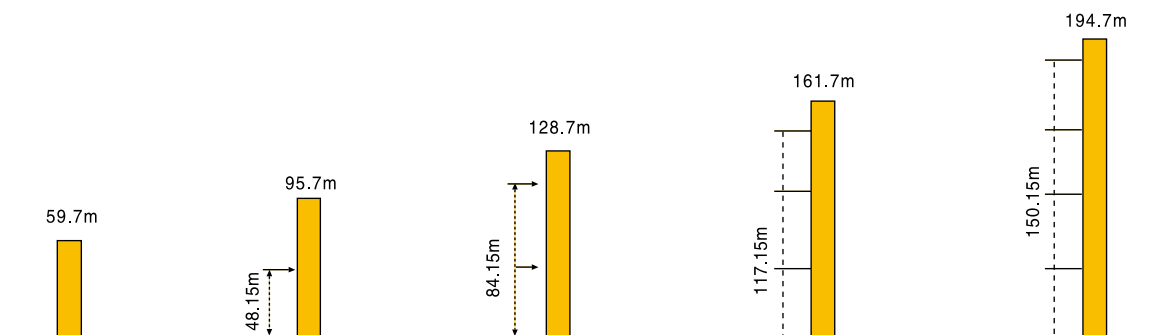
A Distance between collais
H1 Crane height
P Crane weight(in service)
R Horizontal reaction

起重臂
Jib

负荷曲线-Load diagrams



附着-Anchorage




· 工作状态
· 非工作状态
空载, 无配重
起重臂和高度均为最大值


· In service
· Out of service
With outload and
ballast with longest jib
and maximum height


TC6024


Tower Crane

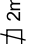

机构-Mechanisms

			m/min	t	m/min	t		ch-PS hp	kw
--	--	--	-------	---	-------	---	---	-------------	----

起升 Hoisting	 10t	55	0-42	5	0-21	10	500m	55	40.5
		RCS 25	0-85	2.5	0.42	5			

变幅 Trolleying		5D3 V4			15-5B			5	3.7
------------------	---	--------	--	--	-------	--	--	---	-----

回转 Slewing		RCV 145			0-0.8 tr/min rpm			2X6	2X4.4
---------------	--	---------	--	--	------------------------	--	--	-----	-------

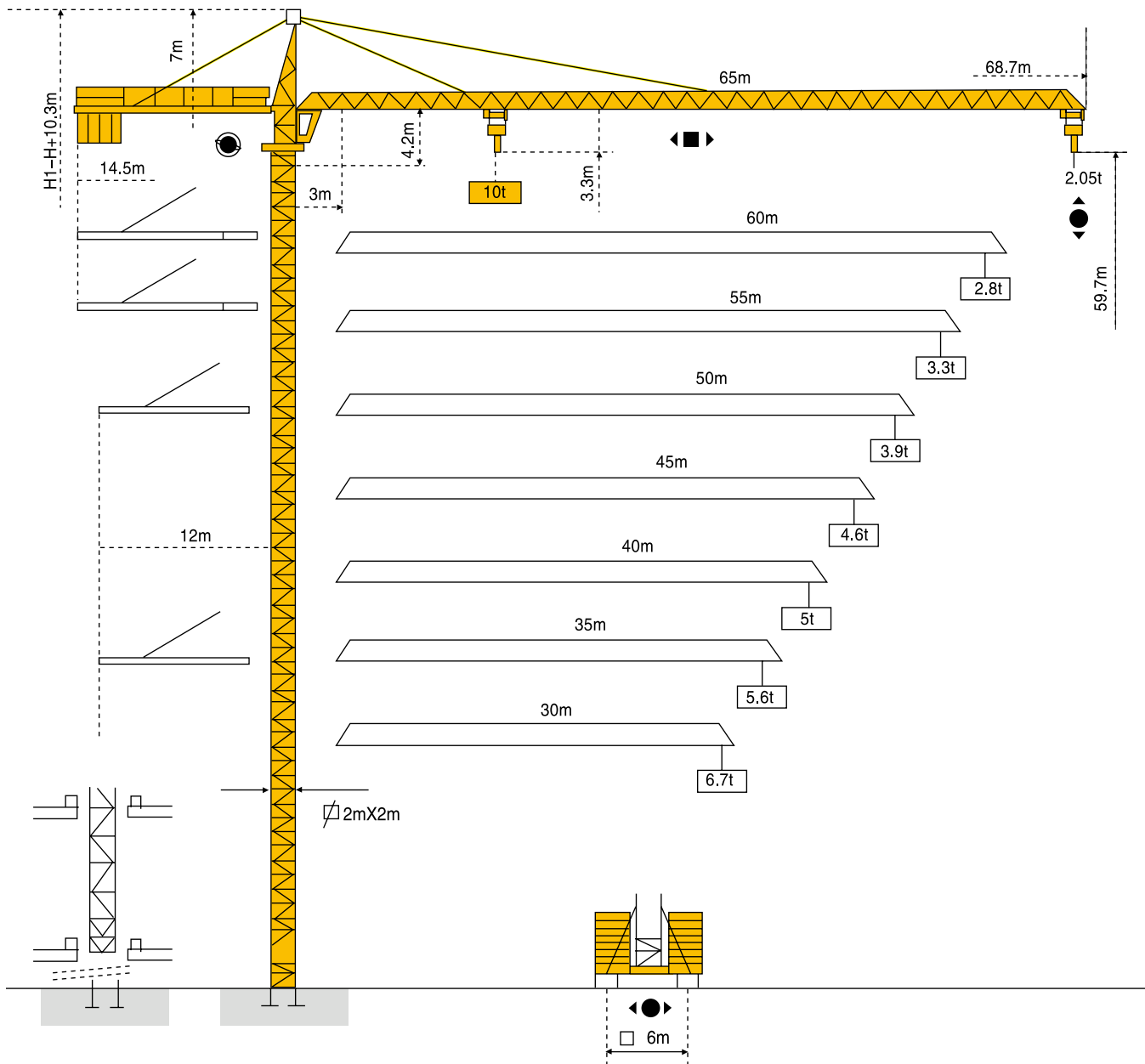
行走 Travelling	 2m	VB20A  R ≥ 13m	RT 544 A12V		13.5-27			4X7	4X5.2
------------------	---	---	-------------	--	---------	--	--	-----	-------

电网-Mains supply	CEI 38 IEC 38	400V(+6%~10%) 50Hz
所需功率 -Necessary electric power	55RCS: 75KVA	
发电机组 -Generator set		

*请问我方咨询 -Consult us

● TC6520 (MC235)

MAST SECTION: L66A2+2XL68B2



Tower Crane

TC6520

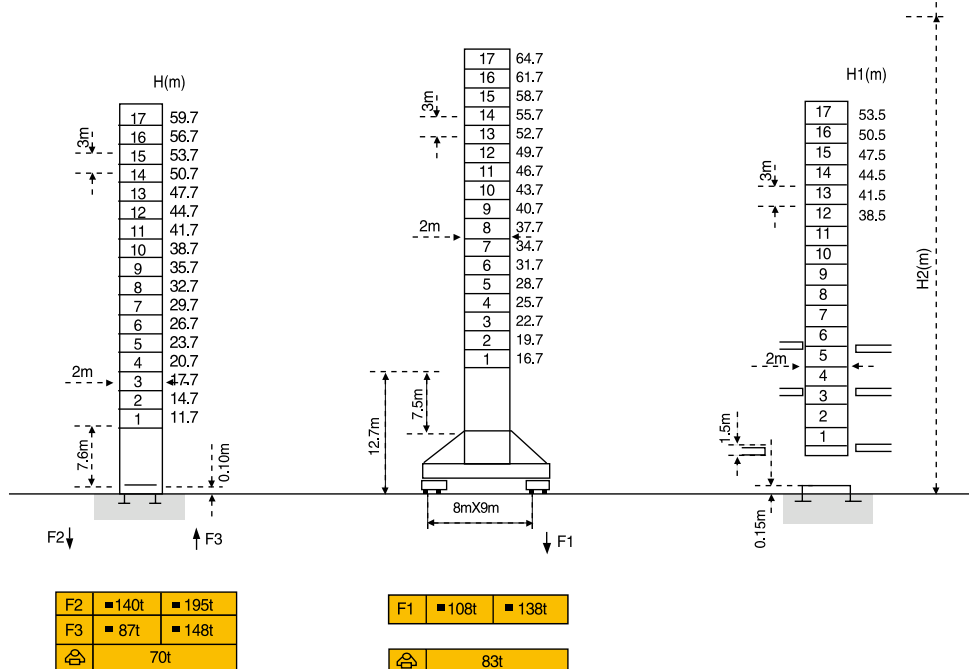
标准节-Masts



2m

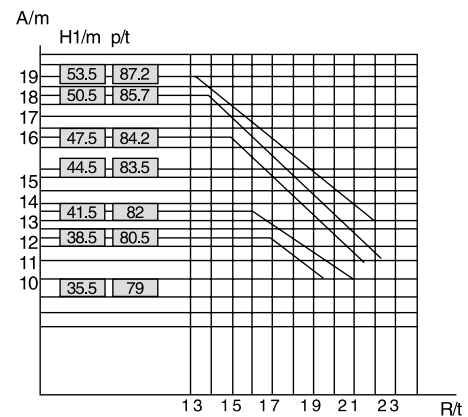
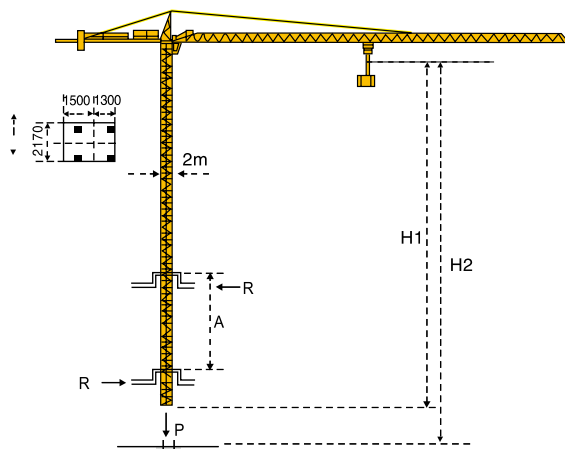
起重臂-Jib

30m ≥ 65m



F=反力-Reactions

楼板上顶升-Climbing crane

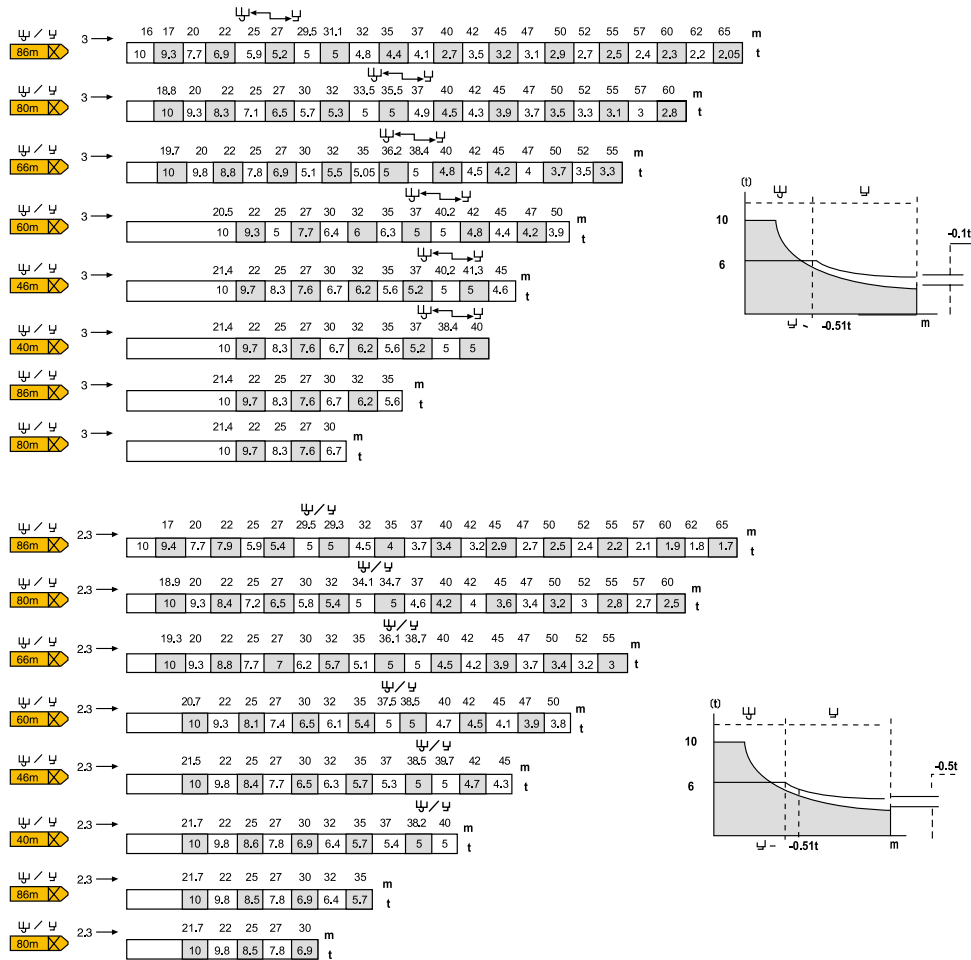


A 各种附着框之间距离
H1 塔机高度
P 工作状态塔机重量
R 水平反力

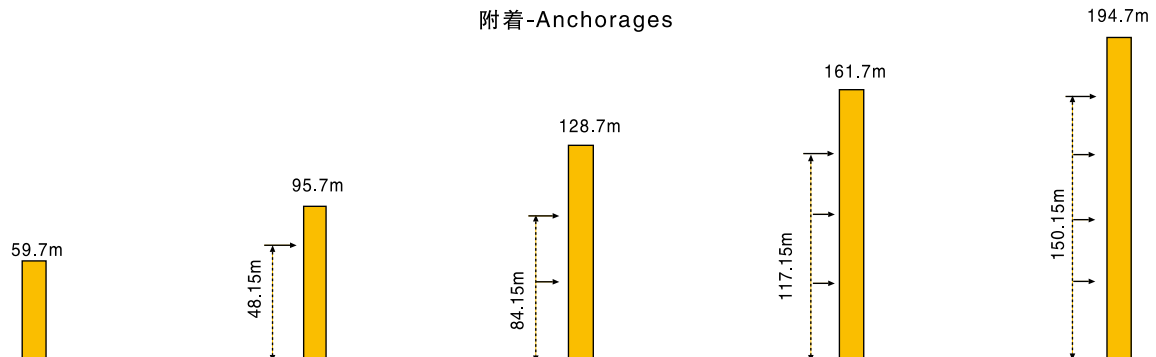
A Distance between collais
H1 Crane height
P Crane weight(in service)
R Horizontal reaction

起重臂
Fleche
Jib

负荷曲线-Load diagrams



附着-Anchorage



- 工作状态
- 非工作状态

空载, 无配重
起重臂和高度均为最大值


- In service
- Out of service


With outload and
ballast with longest jib
and maximum height


TC6520


Tower Crane

机构-Mechanisms

		m/min	t	m/min	t	容绳量	ch-PS hp	kw	
起升 Hoisting	 10t		L		L				
		50 LVF 25	3	5	1.5	10	557m	50	37
			12	5	6	10			
			36	5	18	10			
			46	3.75	23	7.5			
			66	2.5	33	5			
			96	1.25	48	2.5			

变幅 Trolleying		6D3V4-2	10-50 (10t) 100(5t)				7.4	5.4
------------------	---	---------	---------------------------	--	--	--	-----	-----

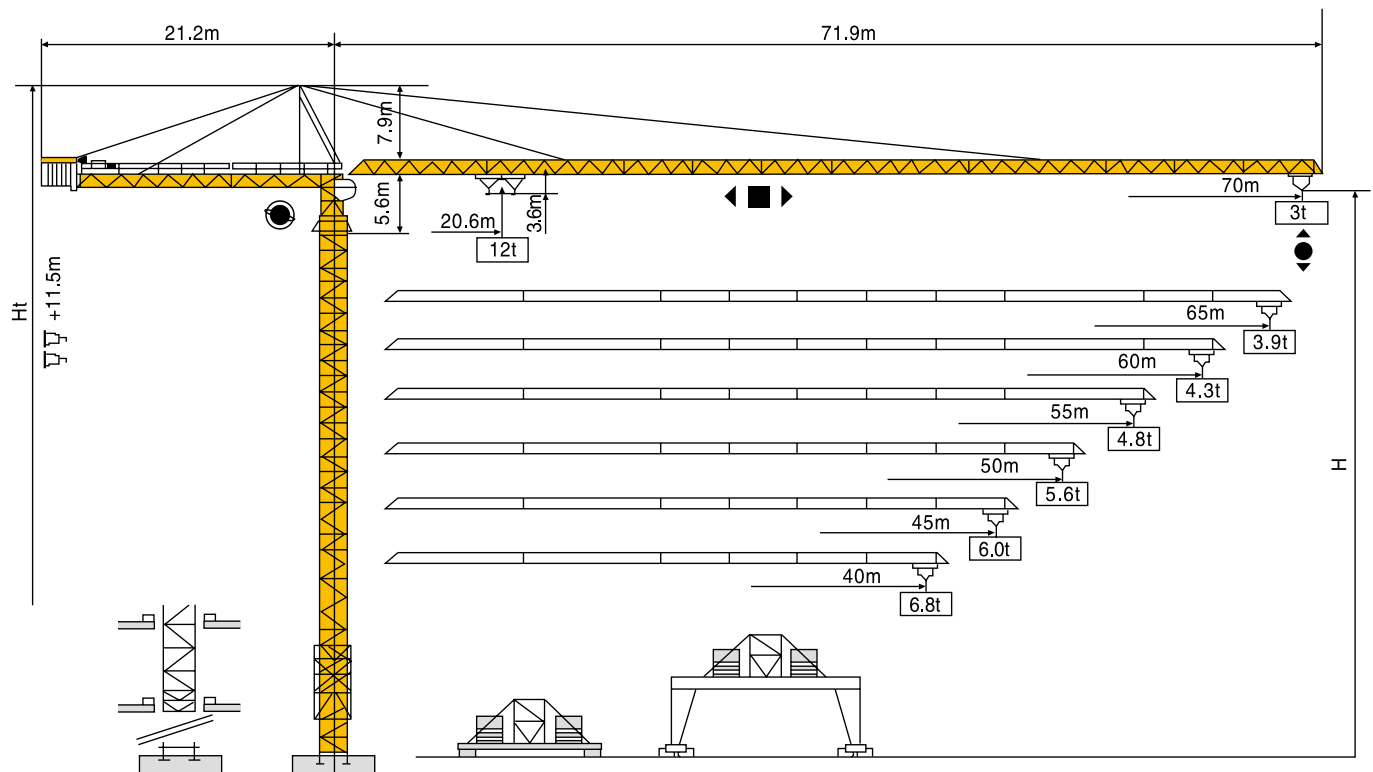
回转 Slewing		RCV 185	0-0.8 tr/min rpm				2X9	2X6.6
---------------	---	---------	------------------------	--	--	--	-----	-------

行走 Travelling	VB 20A  R ≥ 13m	RT 544 A1 2V	13.5-27				4X7	4X5.2
------------------	--	--------------	---------	--	--	--	-----	-------

电网-Mains supply	CEI 38 IEC 38	400V(+6%-10%) 50Hz
所需功率 -Necessary electric power	50LVF:75KVA	
发电机组 -Generator set	•	

*请问我方咨询 -Consult us

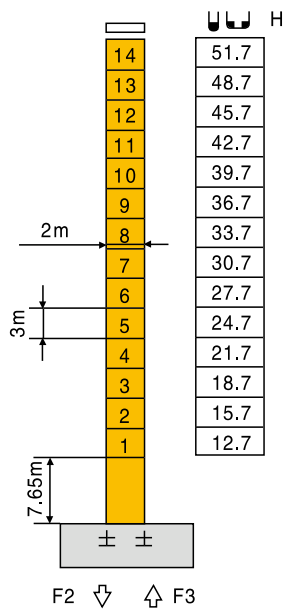
● TC7030 (K30/30)
MAST SECTION: L68B1



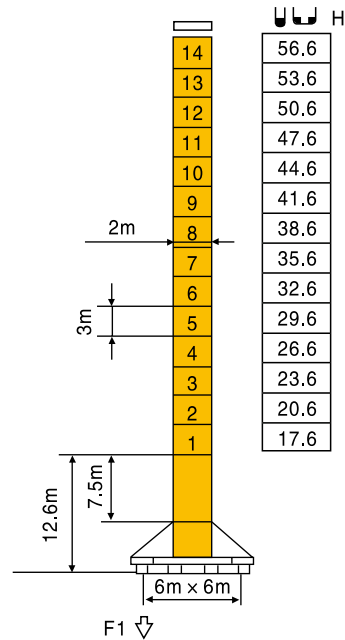
F 反力 Reactions	<ul style="list-style-type: none"> • 工作状态 In service • 非工作状态 Out of service 	 自重 self-load	不带载荷及配重，最大臂长及标准高度时的自重。 Without load and counter-weight With longest jib and standard height.
----------------	---	--	--

Tower Crane

塔身截面 Mast:2m X 2m

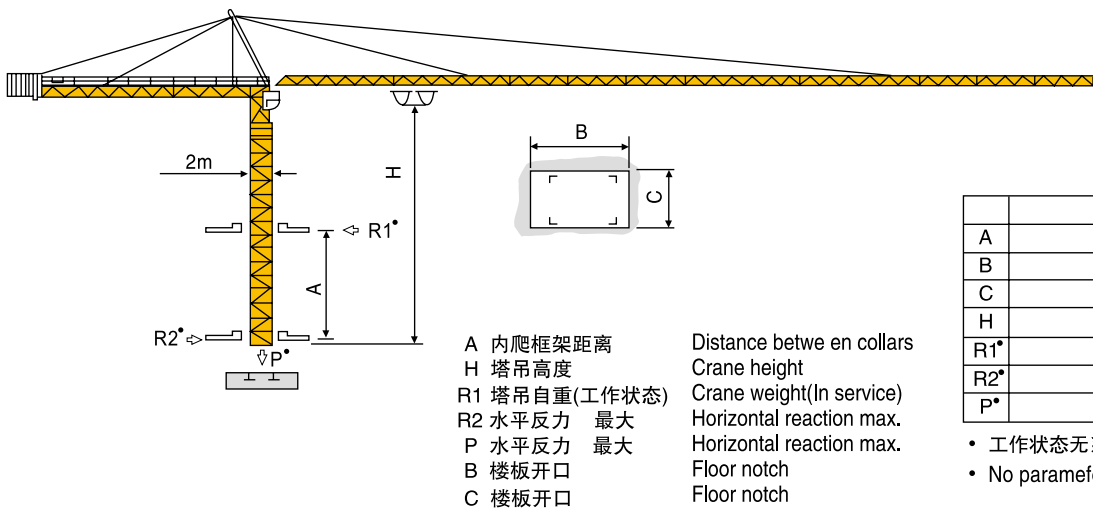


F2	• 144t	• 124t
F3	• 99t	• 78t
总重	82	



F1	• 91t	• 95t
总重	93t	

内爬塔机 Climbing crane

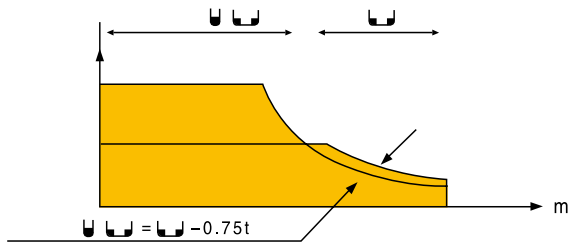


		2m
A		12m-19m
B		2.58m
C		2.17m
H		45.6m
R1*		31.5t-19.9t
R2*		28t-18.4t
P*		95.5t

- 工作状态无系数
- No parametefer in working service

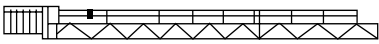


载荷特性 Load specification

70m	3.1 →	20.6	22	25	27	30	32	35	37	40	42	45	47	50	52	55	57	60	62	65	67	70	m													
		12	11.1	9.53	8.67	7.6	7	6.24	5.6	5.23	4.89	4.45	4.18	3.83	3.62	3.32	3.14	2.9	2.75	2.55	2.42	2.25	t													
	3.1 →																				40	42	45	47	50	52	55	57	60	62	65	67	70	m		
																					6	5.64	5.2	4.93	4.58	4.37	4.07	3.89	3.65	3.5	3.3	3.17	3	t		
65m	3.1 →	23.4	25	27	30	32	35	37	40	42	45	47	50	52	55	57	60	62	65					m												
		12	11.1	10.1	8.92	8.24	7.36	6.86	6.21	5.82	5.32	5.01	4.61	4.36	4.03	3.83	3.55	3.38	3.15					t												
	3.1 →																				45	47	50	52	55	57	60	62	65					m		
																					6	5.76	5.36	5.11	4.78	4.58	4.3	4.13	3.9					t		
60m	3.1 →	23.4	25	27	30	32	35	37	40	42	45	47	50	52	55	57	60						m													
		12	11.1	10.1	8.92	8.24	7.36	6.86	6.21	5.82	5.02	5.62	4.61	4.36	4.03	3.83	3.55						t													
	3.1 →																				45	47	50	52	55	57	60						m			
																					6	5.76	5.36	5.11	4.78	4.58	4.3						t			
55m	3.1 →	23.5	25	27	30	32	35	37	40	42	45	47	50	52	55								m													
		12	11.1	10.1	8.95	8.27	7.39	6.89	6.23	5.85	5.34	5.03	4.02	4.38	4.05								t													
	3.1 →																				45	47	50	52	55								m			
																					6	5.76	5.37	5.13	4.8								t			
50m	3.1 →	24.3	25	27	30	32	35	37	40	42	45	47	50										m													
		12	11.6	10.6	8.33	8.62	7.71	7.19	6.51	6.11	5.58	5.27	4.85										t													
	3.1 →																				47	50										m				
																					6	5.6										t				
45m	3.1 →	24.7	25	27	30	32	35	37	40	42	45												m													
		12	10.6	10.7	9.5	8.78	7.06	7.33	6.64	6.23	5.7												t													
	3.1 →																				45												m			
																					6												t			
40m	3.1 →	25.1	27	30	32	35	37	40															m													
		12	1	9.71	8.98	8.04	7.5	6.8															t													
	3.1 →																				45															m
																					6															t



Tower Crane

塔机配重表 Counter-jib ballast









	
	
70m	21.35t
65m	20.4t
60m	18.65t
55m	17.35t
50m	16.05t
45m	13.45t
40m	11.1t

K30/30自升塔式起重机式消化吸收国外先进技术，结合国内塔机使用数十年经验而研制设计的上回旋自升塔式起重机，设计新颖，机构先进，性能可靠，具有轨行、附着、固定和内爬等四种使用形式。该机的最大工作幅度70米，最大起重量12吨，最大起重力矩2952kN.m。附着式最大起升高度155.2米。行走式最大起升高度56.6米，内爬式最大起升高度265米。

该塔机的起升、变幅、回转机构客选用交流变频调速技术，供用户选择。

K30/30self-rasing lower crane is manufactured by means of combining introduction of foreign advance technology with the experiences we got from operation of our own-designed tower crane for several decades, tower crane with top-slowng, having novel design, advanced mechanism and reliable performance can provide you with 4-type: traveling, anchoring, stationary, and inside-climbing. The crane's max. working range is 70m, max. hoisting capacity 12t, max. load-moment 2952kN.m. The max. height under hook is 155.2m when the tower crane in stationary, max. height 56.6m when the tower crane in travelling max. height 265m when the tower crane in climbing.

Customers can choose change frequency conversion speed change technology on the hoisting, trolleying and slewing mechanism about the tower crane.

机构特性 Mechanisms specification								Ch-ps hp	kw	 m
起升 Hoisting		70RCS 30	m/min	40	80	20	40	70	51.5	533 >533 *
			t	6	3	12	6			
		55LVF	m/min	0-40	0-80	0-120	0-20	0-40	0-60	选择型 Optional winch
			t	6	3	1.5	12	6	3	
变幅 Trolleying		4T3V4	m/min	7.5/28/57				6	95Nm	
		4DVF	m/min	0-55				5.4	4	选择型 Optional winch
回转 Slowing		OMD85	r/min	0-0.8				12×2	9×2	
		9RVF	r/min	0-0.76				12×2	9×2	选择型 Optional winch
		RCV145	r/min	0-0.8					145×2Nm	选择型 Optional winch
行走 Travelling		Rt443	m/min	15-30				5×4	3.7×4	
电源 Mains supply				380V 50Hz/440V 60Hz						
KVA 供电容量 Necessary electric power				RCS:90KVA LVF: ※						

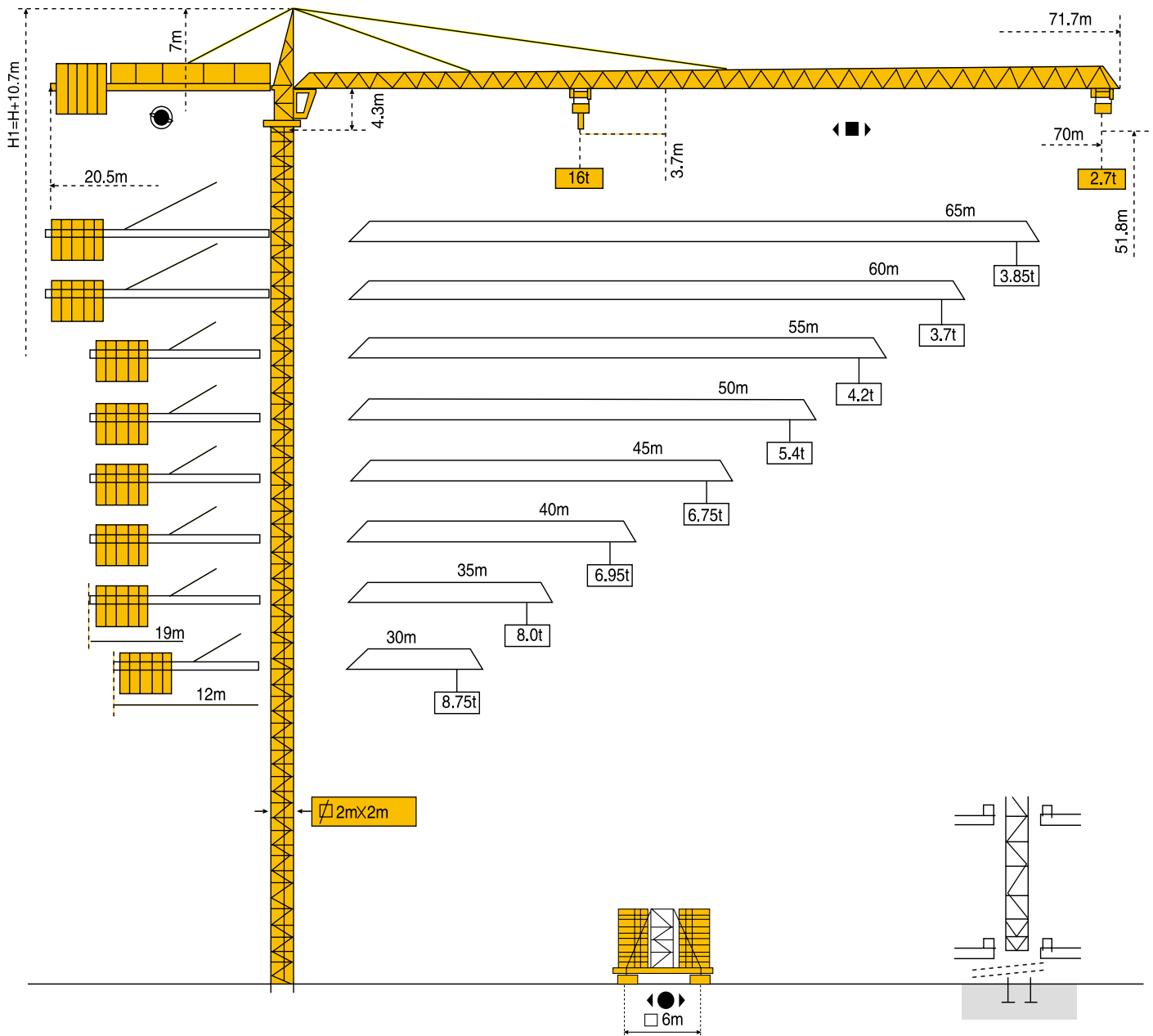
* 在这种情况下要同制造商协商 Consult us

执行标准: Voluntary standards: GB/T 13752

各种参考以修改为准 subject to modification

● TC7027 (MC310K16)

MAST SECTION: L68B2



Tower Crane

TC7027K16

标准节-Masts



2m

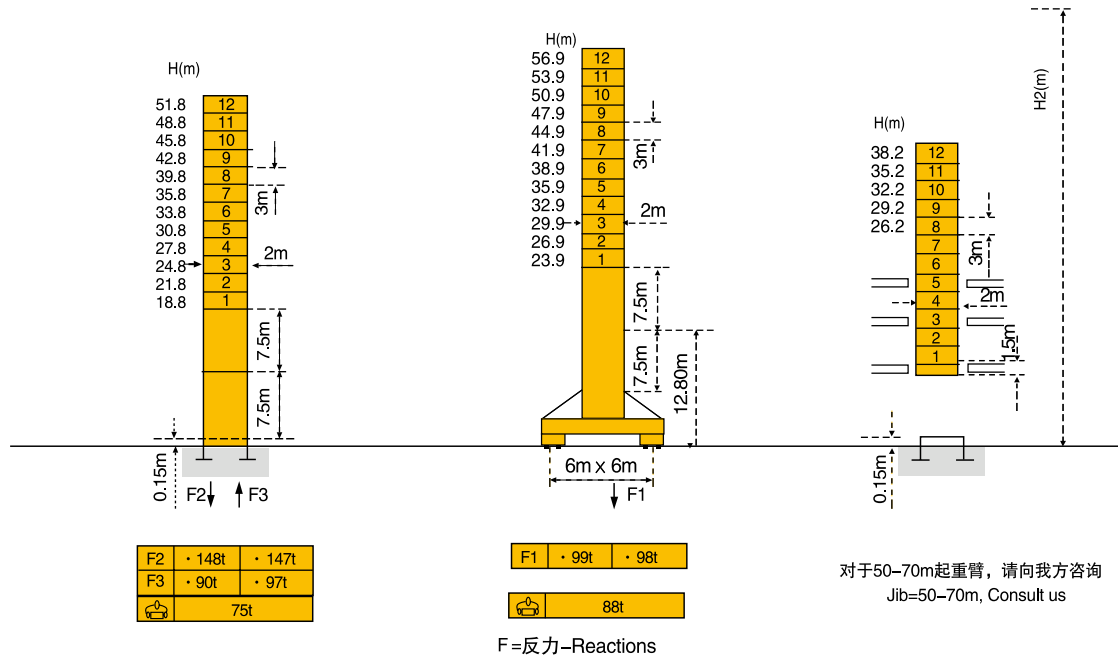
起重臂-Jib

起重臂-Jib

30m → 70m

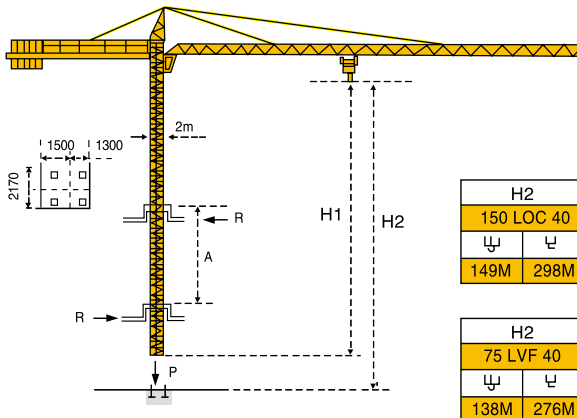
30m → 70m

30m → 45m



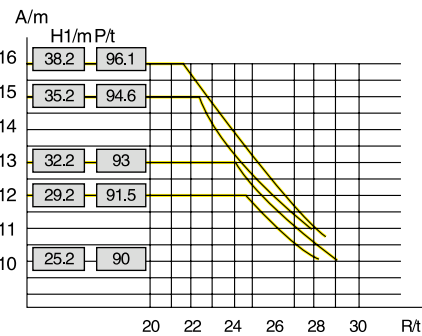
对于50-70m起重臂, 请向我方咨询
Jib=50-70m, Consult us

楼板上顶升-Climbing crane



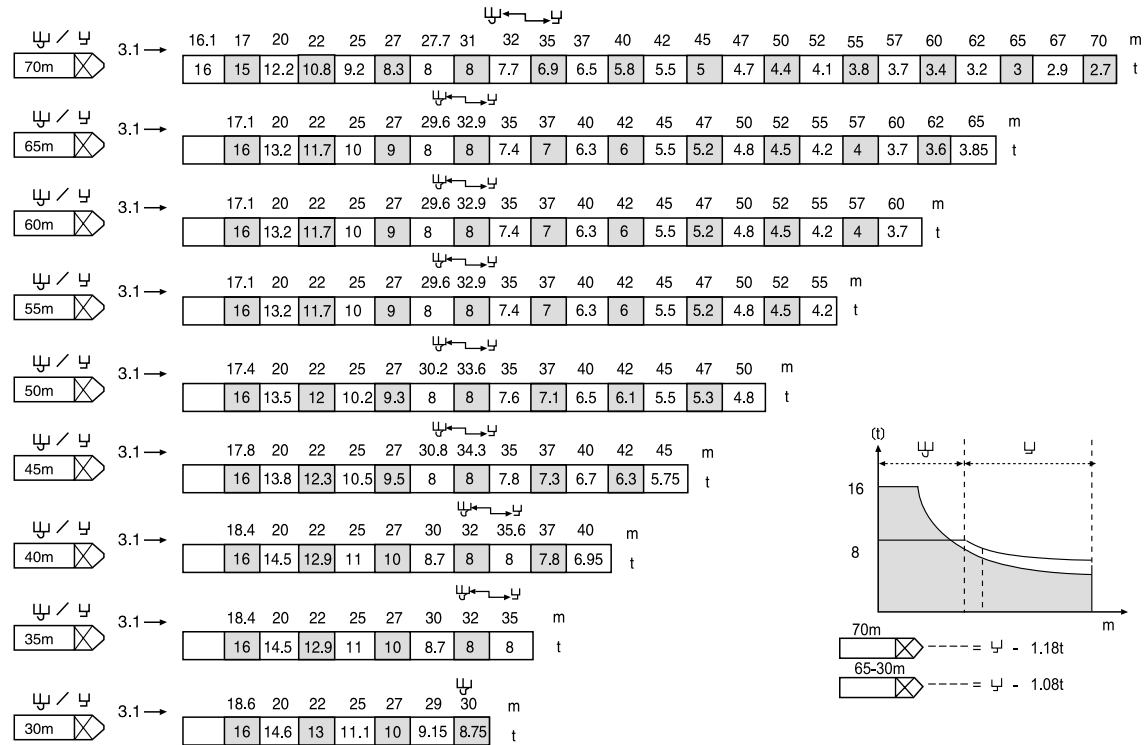
A 各种附着框之间距离
H1 塔机高度
P 工作状态塔机重量
R 水平反力

A Distance between collais
H1 Crane height
P Crane weight(in service)
R Horizontal reaction

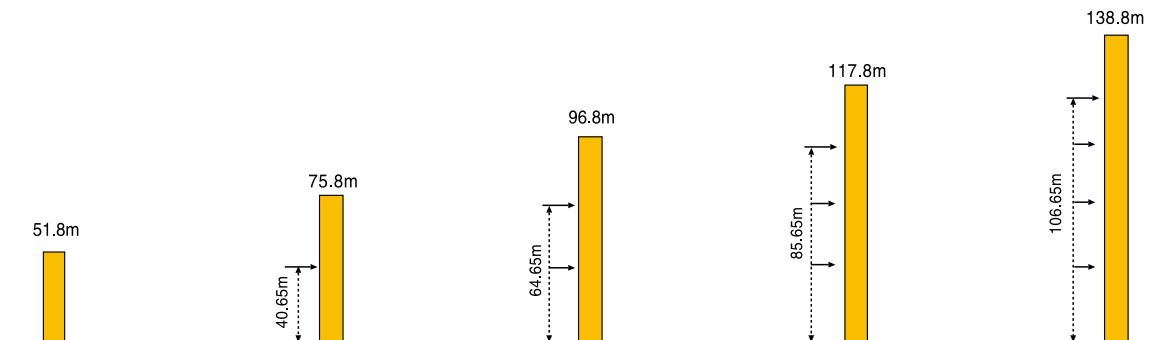


起重臂
Jib

负荷曲线-Load diagrams



附着-Anchorage









- 工作状态
- 非工作状态
- ☁ 空载, 无配重
起重臂和高度均为最大值

- In service
- Out of service
- ☁ With outload and
ballast with longest jib
and maximum height

TC 7027K16

Tower Crane

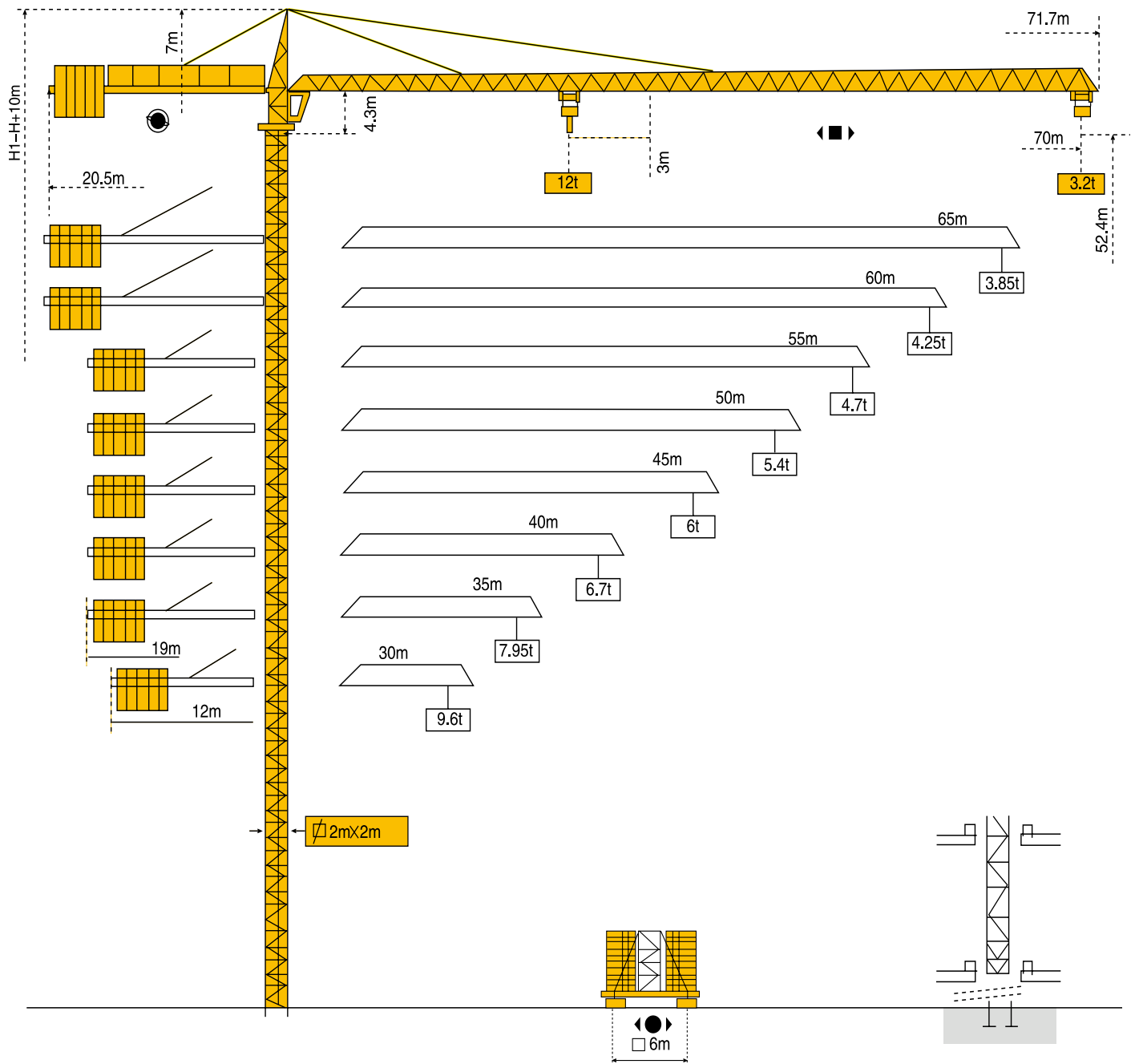
机构-Mechanisms

			m/min	t	m/min	t		ch-PS hp	kw
起升 Hoisting	 16t		⌈		⌋				
		75 LVF 40	0 34 44 70 80	8 6 3 2	0 17 22 35 40	16 12 8 4	553m	75	55
变幅 Trolleying	 16t	150 LCC 40	68 82 102 136 162	8 6 4 2 1	34 41 51 68 81	16 12 8 4 2	596m	150	110
变幅 Trolleying		6DVF6			0-42 (16t) 0-84 (8t) 0-100 (4t)			5.5	4
回转 Slewing		RVF162			0-0.7 tr/min rpm			2X7.5	2X5.5
行走 Travelling	VB 20A VB 21A  R ≥ 13m	RT 544A1 2V			13.5 27			4X7	4X5.2
电网-Mains supply							CE 138 IEC 38	400V(+6%-10%) 50Hz	
所需功率 -Necessary electric power								75LVF: 100KAV 150LCC:175KVA	
发电机组 -Generator set								●	

*请问我方咨询 -Consult us

● TC7032 (MC320K12)

MAST SECTION: L68B2



Tower Crane

TC7032K12

标准节 - Masts



2m

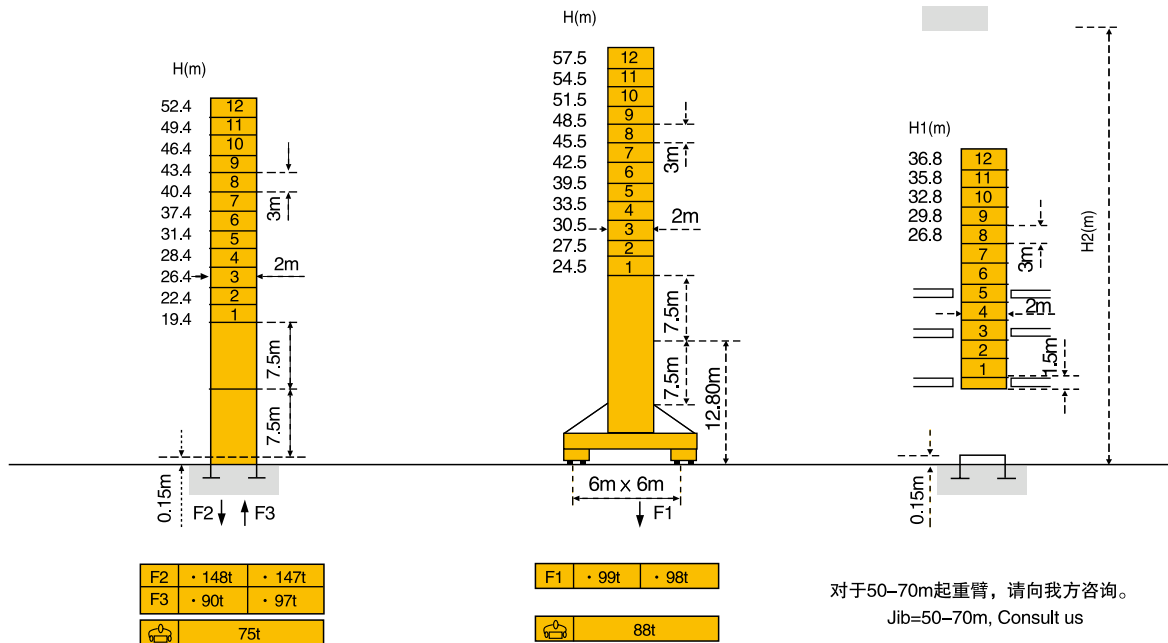
起重臂 - Jib

起重臂-Jib 30m → 70m

30m → 70m

30m → 45m

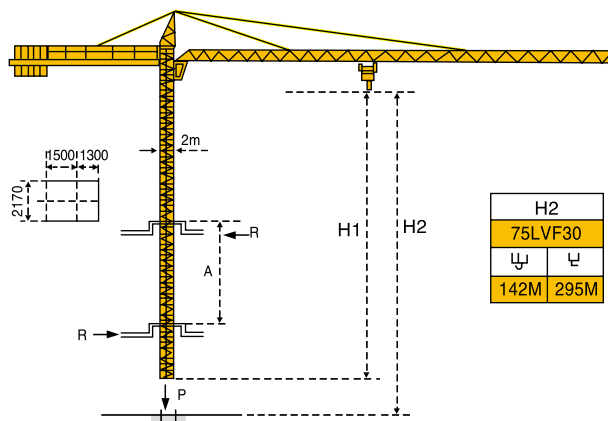
BA 66A



对于50-70m起重臂, 请向我方咨询。
Jib=50-70m, Consult us

F=反力-Reactions

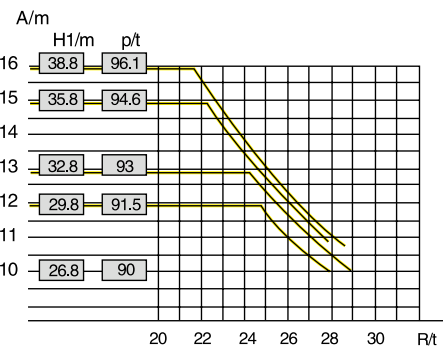
楼板上顶升 - Climbing crane



A 各种附着框之间距离
H1 塔机高度
P 工作状态下塔机重量
R 水平反力

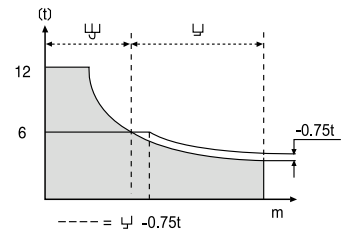
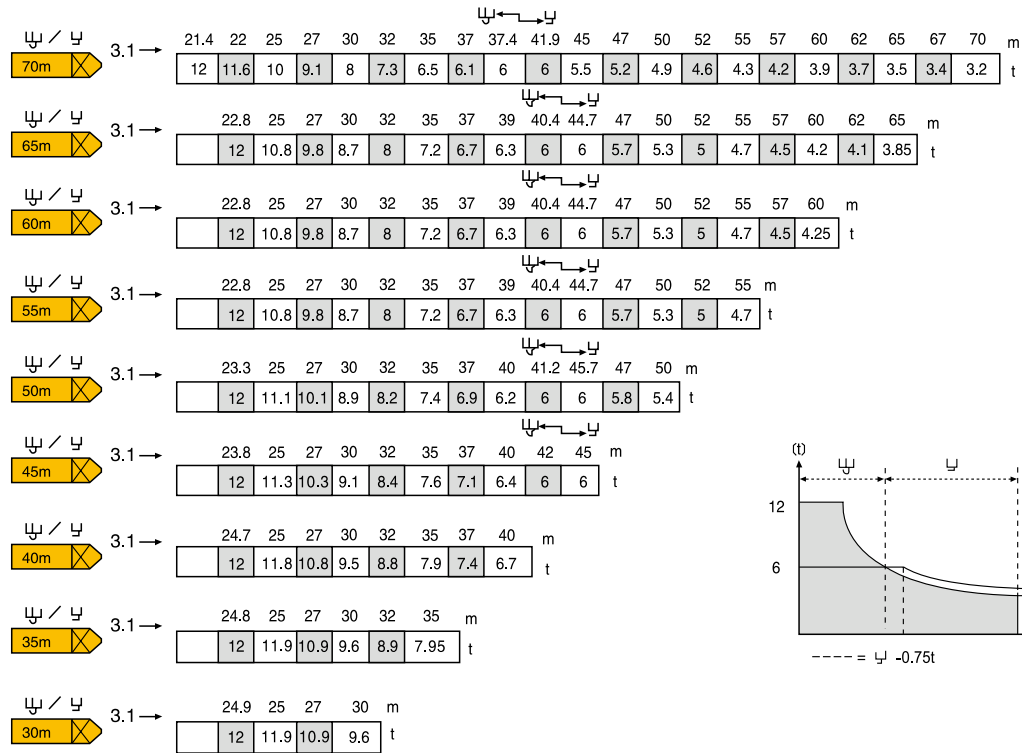
A Distance between collais
H1 Crane height
P Crane weight (in service)
R Horizontal reaction

H2	
75LVF30	
142M	295M

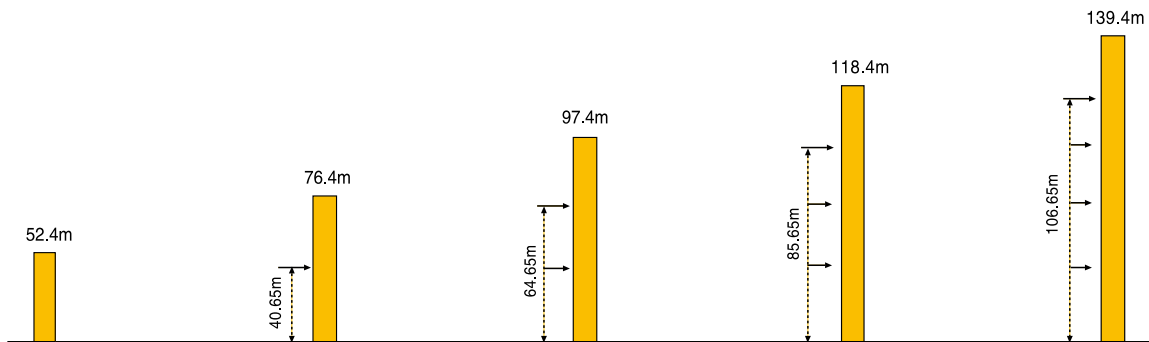


起重臂
Jib

负荷曲线-Load diagrams



附着-Anchorage



- 工作状态
- 非工作状态

空载, 无配重
起重臂和高度均为最大值

- In service
- Out of service

With outload and
ballast with longest jib
and maximum height

TC7032K12

Tower Crane





www.unionlever.com

sales@unionlever.com

鼎联国际集团



UNIONLEVER INTERNATIONAL GROUP

Tower Crane

