



Eye to the side packing



Eye to the sky
with wooden pallets packing



Coils in the container

PACKING AND TRANSPORT:

The packing of coils consists of anti-damp paper, PVC film, hardboard paper, steel box, strapped with steel strips, fitted with locks and edge protectors and guarantees the optimal condition of the delivered goods. Each coil can be additionally fitted with wooden/steel skids(eye to the side) or wooden pallets(eye to the sky)



UNION LEVER

鼎联国际集团



UNIONLEVER INTERNATIONAL GROUP

COATED STEEL



GALVANIZED & PRE-PAINTED STEEL DEPARTMENT

Our department specialized in manufacturing and exporting the following products.

- HOT-DIP GALVANIZED STEEL COIL
- PRE-PAINTED GALVANIZED STEEL COIL
- HOT-DIP GALVALUME/ALUZINC STEEL COIL
- PRE-PAINTED GALVALUME/ALUZINC STEEL COIL

We can ensure that stable quality standards are maintained, strictly meeting both market requirement and customer expectations. Our products enjoy an excellent reputation and have been exported to Africa, the Middle-East, Southeast-Asia, South-America and Russia etc.. We sincerely hope to establish good and long-term business relationship with your esteemed company from all over the world.

CONTENTS

- Cold Rolling and Galvanizing
- Process Flow
- Hot-dip Galvanized Steel
- Pre-painted Galvanized Steel
- Hot-dip Aluzinc Steel
- Pre-painted Aluzinc Steel
- Packing



COLD ROLLING AND GALVANIZING

MANUFACTURING PROCESS



Push-pull Acid Pickling Line

We adopt the Push-pull Acid Pickling Line by the means of turbo flow technology to clean the hot rolled steel strip with hydrochloric acid and ensure removal of scale prior to rolling of materials. Leveler of 9 columns are adopted so as to guarantee the straightness of strap steel and helps the strap steel goes through the belt. Pickling system involves acid circling system, bleach wash circling system and smoke discharging system.



Cold Reversing Mill

The 4 convertible roller cold reversing mill reduced the pickled and trimmed hot rolled coils to a specified thickness ranging from 1.6mm right down to 0.25mm. The work roll shifting mechanism coupled with selective roll coolant system, guided through auto shape meter ensures perfect flat strip. The auto gauge control system enables close thickness tolerance to match the different standard.



Continuous Hot-dip Galvanizing Line

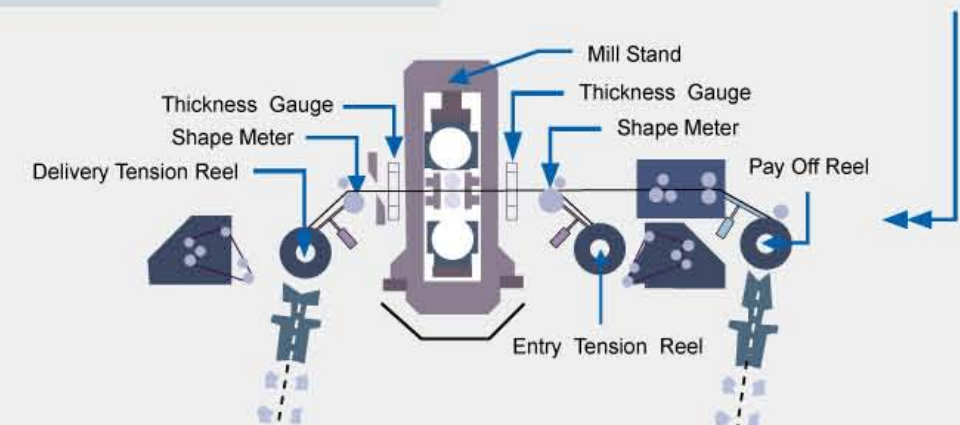
NOF is used in this Galvanizing Line. Oil and dirt on the surface of the cold rolled steel strip are cleaned off in the Nonoxidizing Direct Flame Furnace. The strip is then softened and will be propitious to forming process since its mechanical properties could meet various customer requirements. In order to improve the surface quality and meet different customers' requirements, surface treatments like skin pass, tension leveler and chemical surface treatment, etc., are utilized.

PROCESS FLOW

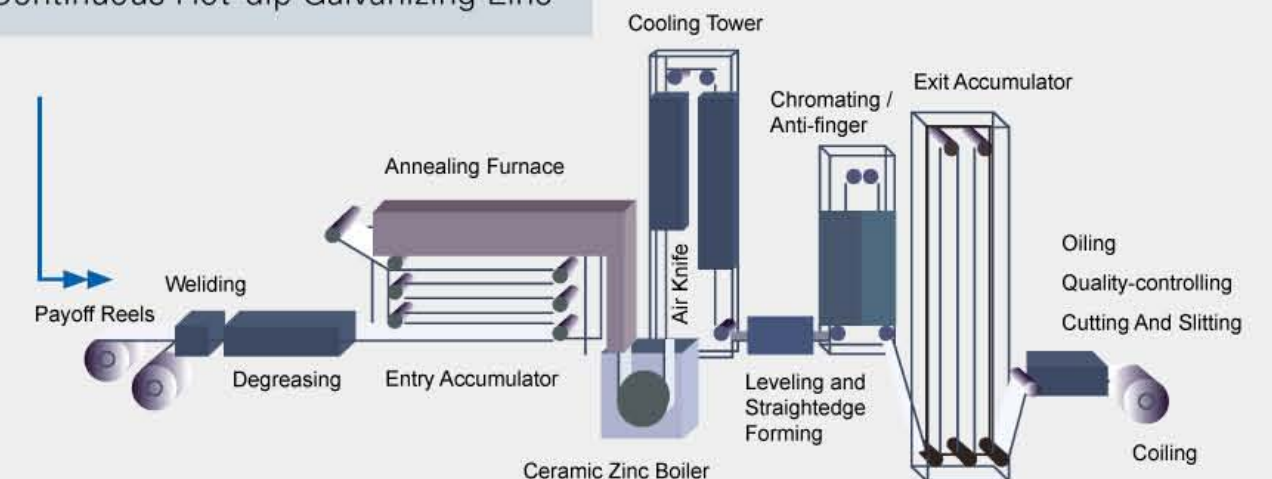
Push-pull Acid Pickling Line



Cold Reversing Mill

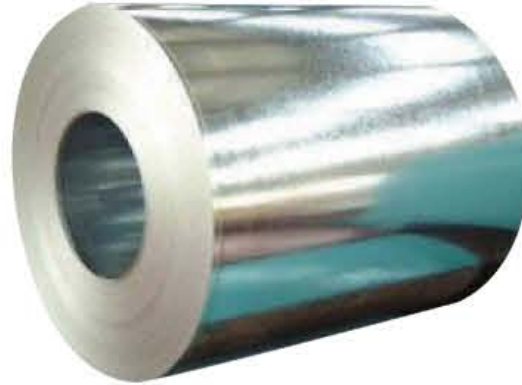


Continuous Hot-dip Galvanizing Line



HOT-DIP GALVANIZED STEEL COIL

Hot-dip galvanized steel coils are available with a pure zinc coating through the hot-dip galvanizing process. It offers the economy, strength and formability of steel combined with the corrosion resistance of zinc. The hot-dip process is the process by which steel gets coated in layers of zinc to protect against rust. It is especially useful for countless outdoor, marine and industrial applications.



MAIN SPECIFICATION

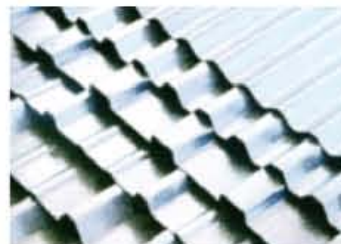
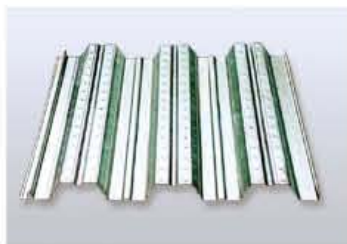
Thickness	0.23mm-3.5mm
Width	914mm-1250mm
Coating Mass	60g/m ² -350g/m ²
Spangle	Regular Spangle, Minimized Spangle, Zero Spangle
Surface Treatment	Chromated or oiled treatment available
Coil Inner Diameter	508mm or 610mm

STANDARD & GRADE

	ASTM A653M-06a	EN10327:2004/10326:2004	JIS G 3302-1994
Commercial Quality	G5	DX51D+Z	SGCC
Structure Steel	SS GRADE 230	S220GD+Z	SGC340
	SS GRADE 255	S250GD+Z	SGC400
	SS GRADE 275	S280GD+Z	SGC440
	SS GRADE 340	S320GD+Z	SGC490
	SS GRADE 550	S350GD+Z S550GD+Z	SGC570

APPLICATION

Production of cold formed corrugated sheets and profiles for roofing, cladding, decking, tiles, sandwich walls, rainwater protective systems, air conditioning duct as well as electrical appliances and engineering.



Our Q.C personnel along with R&D team are continuously working to ensure strict adherence to international standards. Each lot goods are strictly inspected before delivering to our customers and supply customers with inspection certificate.

MECHANICAL PROPERTY

JIS G 3302-1994						
Base Metal Classification	Yield Strength (N/mm ²)	Tensile Strength (N/mm ²)	% Elongation (Minimum)			
			Nominal Thickness(mm)			
			0.25-0.40	0.40-0.60	0.60-1.00	1.00-1.50
SGCC	-	-	-	-	-	-
SGCH	-	-	-	-	-	-
SGCD1	-	270 min	-	34	36	37
SGC340	245 min	340 min	(20)*	20	20	20
SGC400	295 min	400 min	(18)*	18	18	18
SGC440	335 min	440 min	(18)*	18	18	18
SGC490	365 min	490 min	(16)*	16	16	16
SGC570	560 min	570 min	-	-	-	-

ASTM A653M-06a			
Base Metal Classification	Yield Strength (MPa)	Tensile Strength (MPa)	% Elongation (Minimum)
			Applicable To Full Range Of Nominal Thickness
CS TYPE A	(170-380)*	-	≥20
CS TYPE B	(205-380)*	-	≥20
CS TYPE C	(170-410)*	-	≥15
FS TYPE A & B	(170-310)*	-	≥26
SS 230**	230 min	310	≥20
SS 255**	255 min	360	≥18
SS 275**	275 min	380	≥16
SS 340**	340 min	-	-
SS 550**	550 min	570	≥12

EN10327:2004 / EN10326:2004				
Base Metal Classification	Yield Strength (N/mm ²)	Tensile Strength (N/mm ²)	% Elongation (Minimum)	
			Nominal thickness(mm)	
			≤0.70mm	0.7mm-1.5mm
DX51D	-	270-500	20	22
DX52D	140-300	270-420	24	26
S 220 GD	220 min	300 min	18	20
S 250 GD	250 min	330 min	17	19
S 280 GD	280 min	360 min	16	18
S 320 GD	320 min	390 min	15	17
S 350 GD	350 min	420 min	14	16
S 550 GD	550 min	560 min	-	-

*Values mentioned in () are no mandatory

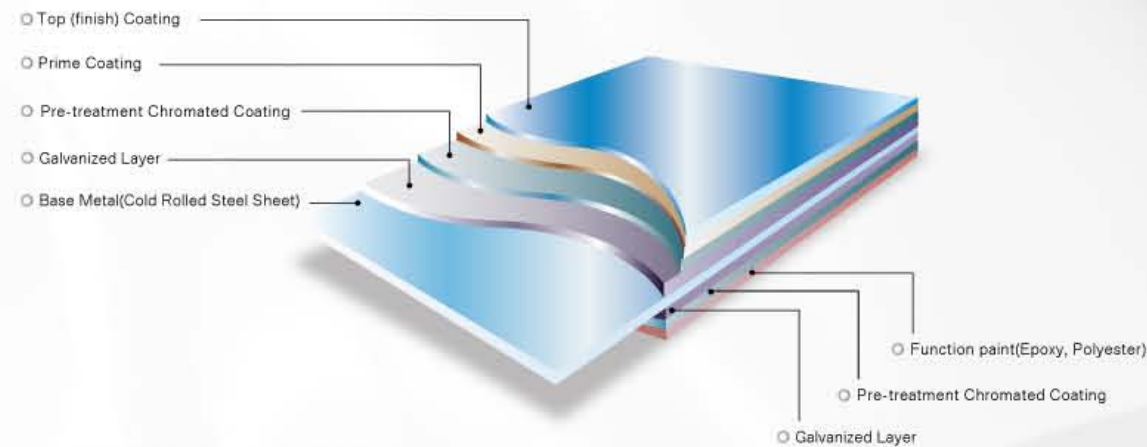
** Inch-pound Units: SS33, SS37, SS40, SS50, SS80

PRE-PAINTED GALVANIZED STEEL COIL

With GI as base metal, after pretreatment (degrease and chemical treatment) and liquid dope with several layers of color, then after firing and cooling, finally the plate steel is called pre-painted galvanized steel(PPGI). Pre-painted galvanized steel is good capable of decoration, molding, corrosion resistance.



STRUCTURE



MAIN SPECIFICATION

Thickness	0.23mm-1.2mm (BMT)
Width	914mm-1250mm
Zinc Coating Mass	80g/m ² -275g/m ²
Paints	Standard Polyester(PE), PVDF
Color	RAL Scale*
Coil Inner Diameter	508mm or 610mm
Coil Weight	3-7mt
Base Material	Hot-dip galvanized steel or cold rolled steel

*Special color available on customer request

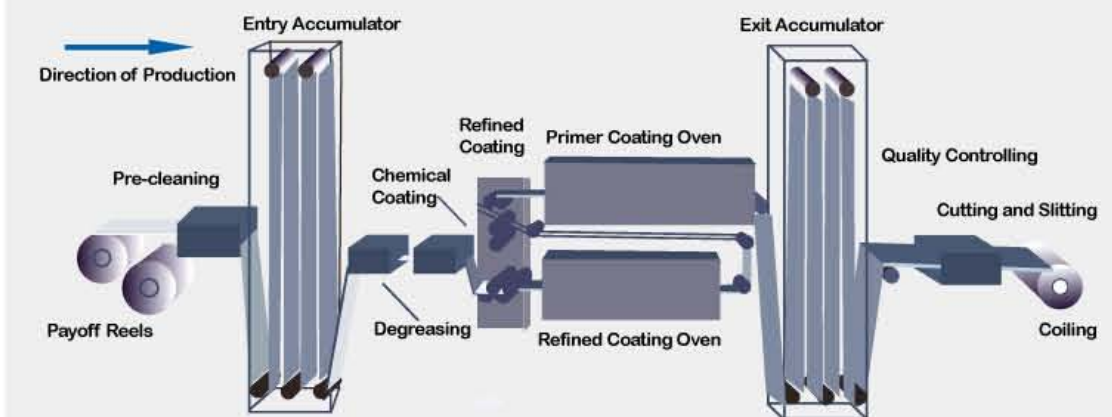
STANDARD & GRADE

	ASTM A755M-03	EN10169: 2003	JIS G 3312:1994
Commercial Quality	CS	DX51D+Z	CGCC
Structure Steel	SS GRADE 230	S220GD+Z	CGC340
	SS GRADE 255	S250GD+Z	CGC400
	SS GRADE 275	S280GD+Z	CGC440
	SS GRADE 340	S320GD+Z	CGC490
	SS GRADE 550	S350GD+Z	CGC570
		S550GD+Z	

POLYESTER PAINT PROPERTY

TEST ITEM	STANDARD	PE PAINT FOR STEEL COIL
T Bend	NCCA11-19	≤2T
Cupule Test	GB/T9753	>8mm
Impact(Shock Force J)	GB/T1732	>9J
Adhesion (MEK)	GB/T9286	Not less than 0
Pencil Hardness	GB/T6739	≥2H
Gloss	GB/T1743	≤±5%
Chromatism (ΔE)	ECCA T3	ΔE≤5
MEK Scrub Resistance	NCCA11-18	≥100
Salt Spray Resistance	GB/T10125	500hr
Weather Resistance (Q.U.V)	GB/T1665	500hr
Wet and Heat Resistance	GB/T1740	>1000hr

Colour Coating Line



Color coated equipments with high quality are mainly imported from U.S.A, Japan and Taiwan. It takes advantage of American GFG coating system and the process of two baking. Therefore, high quality and strong corrosion-resistant color-coated sheet could be produced.



APPLICATION

Outdoor: roof, roof structure, surface sheet of balcony, frame of window, door, door of garage, roller shutter door, booth, Persian blinds, cabana, refrigerated wagon and so on.

Indoor: door, isolater, frame of door, light steel structure of house, sliding door, folding screen, ceiling, internal decoration of elevator.



HOT-DIP ALUZINC STEEL COIL

Hot-dip Aluzinc Steel Sheet is substrated on Cold Rolled Steel (CRC) in various strength and specification. Coating composition is 55% aluminum in weight ratio, 43.4% zinc, and 1.5% silicon, with excellent corrosion and heat resistance performance.



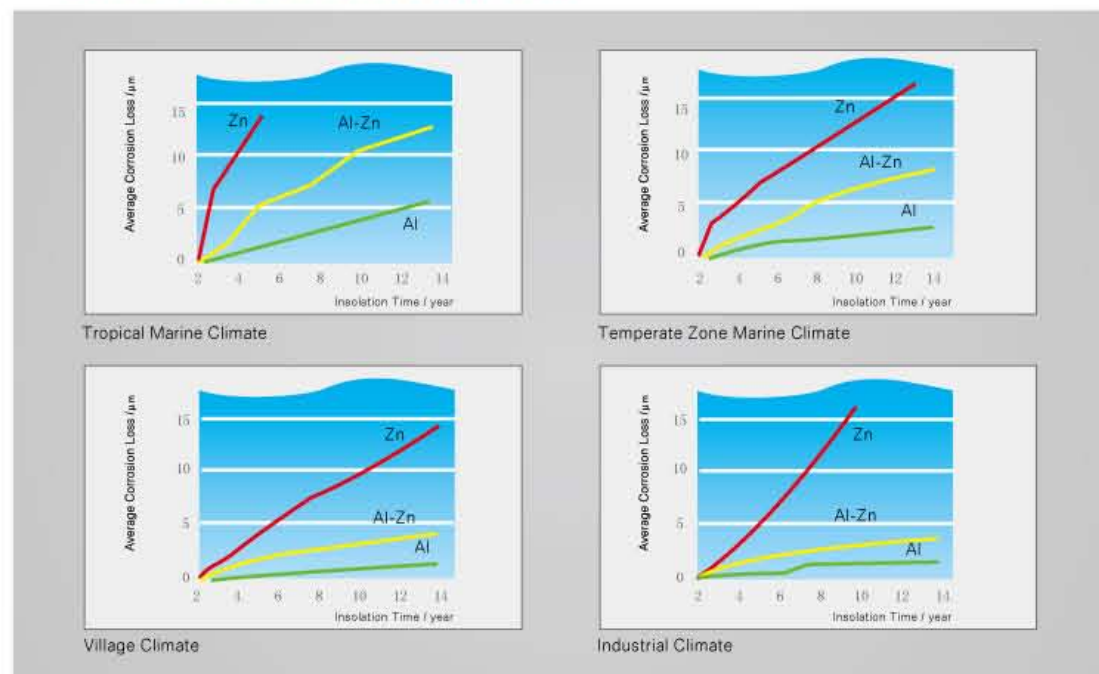
MAIN SPECIFICATION

Thickness	0.23mm-2.5mm
Width	914mm-1250mm
Coating Mass	60g/m ² -185g/m ²
Surface Treatment	Chromated or anti-finger treatment available
Coil Inner Diameter	508mm or 610mm

STANDARD & GRADE

	ASTM A792M-06a	EN10327-2004	JIS G 3321:2007
Commercial Quality	CS	DX51D+AZ	SGLCC
Structure Steel	SS GRADE 230	S220GD+AZ	SGLC400
	SS GRADE 255	S250GD+AZ	SGLC440
	SS GRADE 275	S280GD+AZ	SGLC490
	SS GRADE 340	S320GD+AZ	SGLC570
	SS GRADE 550	S350GD+AZ	S550GD+AZ

ATMOSPHERIC CORROSION TEST



PRE-PAINTED ALUZINC STEEL COIL

With hot-dip aluzinc steel as base metal, after pretreatment (degrease and chemical treatment) and liquid dope with several layers of color, then after firing and cooling, finally the plate steel is called pre-painted aluzinc steel coil. it generally display superior workability, durability, and weather resistance.



MAIN SPECIFICATION

Thickness	0.23mm-1.2mm (BMT)
Width	914mm-1250mm
Zinc Coating Mass	60g/m ² -150g/m ²
Paints	Standard Polyester(PE), PVDF
Color	RAL Scale*
Coil Inner Diameter	508mm or 610mm
Coil Weight	3-7mt
Base Material	Aluzinc steel

*Special color available on customer request

STANDARD & GRADE

	ASTM A755M-03	EN10169-2003	JIS G 3322:2007
Commercial Quality	CS	DX51D+AZ	CGLCC
Structure Steel	SS GRADE 230	S220GD+AZ	CGLC400
	SS GRADE 255	S250GD+AZ	CGLC440
	SS GRADE 275	S280GD+AZ	CGLC490
	SS GRADE 340	S320GD+AZ	CGLC570
	SS GRADE 550	S350GD+AZ	S550GD+AZ

APPLICATION

Production of roofing, wall panel, garage, barrier, shutter, frame of window, air-condition system covering, solar heating, electrical unit, refrigerated wagon and so on.

