

www.unionlever.com

CONSTRUCTION MACHINERY



鼎联国际集团

UNIONLEVER INTERNATIONAL GROUP



ZL12 WHEEL LOADER

Performance

Rate load: 1200(kg)
Bucket capacity: 0.6(m³)
Wheel Distance: 1400(mm)
Axle-base: 2005(mm)
Loader clearance radius: 4500(mm)
Min Base to the ground: 260(mm)
Dump clearanle: 2650(mm)
Time of Raise: 4(s)
Hydraulic cycle time: 8.5(s)
Drive Means: Four Drive
Operating weight: 3100(kg)
Overall dimensions : (Length*width*height)4800*1730*2720(mm)



Engine

Engine Model: CHANGCHAI 4L68
Engine Rated power: 37(kw)
Engine Rated output: 2200(rpm)

ZL16F WHEEL LOADER

Performance

Rated loading: 1600kg
Overall weight: 4800kg
Rated bucket capacity: 0.9m³

Engine

Model: Wei chai ZH4100G14-3
Type: Vertical, in-line, water cooled,
4-stroke diesel engine
No. of cylinder-bore/stroke: 4—100×125mm
Rated power: 45kw—2200r/min

Transmission system

Maximum speed: 24km/h



WHEEL LOADER ZL30F



Feature

1. Reasonable driving system, big traction force, perfect axle and transmission distribution and good working performance.
2. The bucket has auto-leveling function. The sum of lifting, falling and unloading time is priority than GB standard.
3. Reliable spare parts, reasonable layout and powerful engine to make sure the high efficiency working performance and powerful digging capacity.
4. This machine is equipped with hydraulic torque converter and power shift transmission, which makes machine easy operation.
5. Hydraulic-pneumatic activated brake system which make sure the braking is safety and reliable.
6. Full sealing steel structure cab, with a/c conditioner, make sure the safety and comfort drive with nice field.

Performance Parameters of Entire Machine

1. Capacity of bucket: 1.7m³
2. Loading weight: 3000kg
3. Lifting time of bucket: 5.9s
4. Maximum climbing gradient: 25%
5. Articulation steering angle: +380/-380
6. 1st speed: 6.05km/h
2nd speed: 11.76km/h
Third speed: 20.34km/h
Fourth speed: 36.2km/h
Turning radius
(Outer side of rear wheels): 5110mm
Drawing force: 100KN
Maximum loading and unloading height: 2850mm
Unloading distance at max unloading height: 950mm
Max unloading angle of bucket at max unloading height: 45°

Overall dimensions

Length: 6780mm Width: 2360mm
Height: 3200mm Axle-base: 2700mm
Wheel-base: 1800mm

Engine:

Model: CUMMINS6BT5.9 / WEI CHAI
Maximum out put: 93kw
Revolution at maximum horsepower: 2200r/min
Maximum torque: 430Nm
Revolution at maximum torque: (1400-1600)r/min

Weight:

Total weight: 10000kg

Wheel:

Specification of tyre: 17.5-25



WHEEL LOADER ZL50F

Feature:

1. Torque converter with double Turbines.
2. Hydraulic steering and articulating frame.
3. Clear and wide-vision cab, “French Green” colour glass to inhibit ultra-Violet light and make the operator more comfortable.
4. Advanced structure and convenient for maintenance and repairing; all performance parameters have reached world's advanced level.
5. Cold & warm air-conditioner with environmental protection are for use's option.
6. To apply priority unload in hydraulic system to save energy.
7. To apply movable console to operate conveniently.

Performance Parameters of Entire Machine

1. Capacity of bucket: 3m³
2. Loading weight: 5000kg
3. Lifting time of bucket: 6.6s
4. Maximum climbing gradient: 30%
5. Articulation steering angle: +400/-400
6. 1st speed: 12km/h
2nd speed: 34km/h
Reverse gear: 17km/h
Turning radius(Outer side of bucket tip): 6680mm
Drawing force: 155KN
Max tractive force: 120KN
Maximum loading and unloading height
(Unloading angle 45°): 3050mm
Unloading distance at max unloading height: 1240mm

Overall dimensions

Length: 7960mm Width: 3060mm
Height: 3530mm Axle-base: 3300mm
Wheel-base: 2200mm

Engine

Model: CUMMINS 6CTA8.3- C215 / SHANGCHAI C6121
Maximum output: 215HP 160KW
Revolution at maximum horsepower: 2200/2200r/min
Maximum torque: 872Nm 900NM

Weight

Total weight: 16500kg

Wheel

Specification of type: 23.5-25

ZL20F Wheel loader

Performance

rated loading: 2000kg
overall weight: 5700kg

Engine

model: Wei chai R4105G57
type: Vertical, in-line, water cooled,
4-stroke diesel engine
No. of cylinder-bore/stroke: 4—105×125mm
rated power: 55kw—2200r/min

Transmission system

maximum speed: 24km/h

Tyre

type specification: 16/70—20



ZL60F Wheel loader

Performance

rated bucket capacity: 3.3m³
rated load: 6000kg
overall operating weight: 19400kg

Engine

Engine: CUMMINS/ WEICHAI
Type: in-line, water cooled, 4-stroke, direct-injection
Rated power: 176KW

Transmission

Forward speeds: 42km/h

Tires type

Specifications: 23.5-25 20PR(L3)

working hydraulic system

Type: Gear pump
Working pump: CBGj3125 DOUBLE -PUMP interflow
Working pressure: 160kgf/cm²



WZY30-25 BACKHOE LOADER



Performance

Total operating weight: 7600Kg
Loading bucket capacity : 0.96m³
Loading lift capacity: 36.43KN

Engine

Model: CUMMINS 4BT4.5-C99/WEICHAI R4105
Cylinder – internal diameter*stroke: 4 – 105x125mm
Rated power: 55KW

Steering system

Rype: articulated hydraulic steering
System pressure: 20Mpa



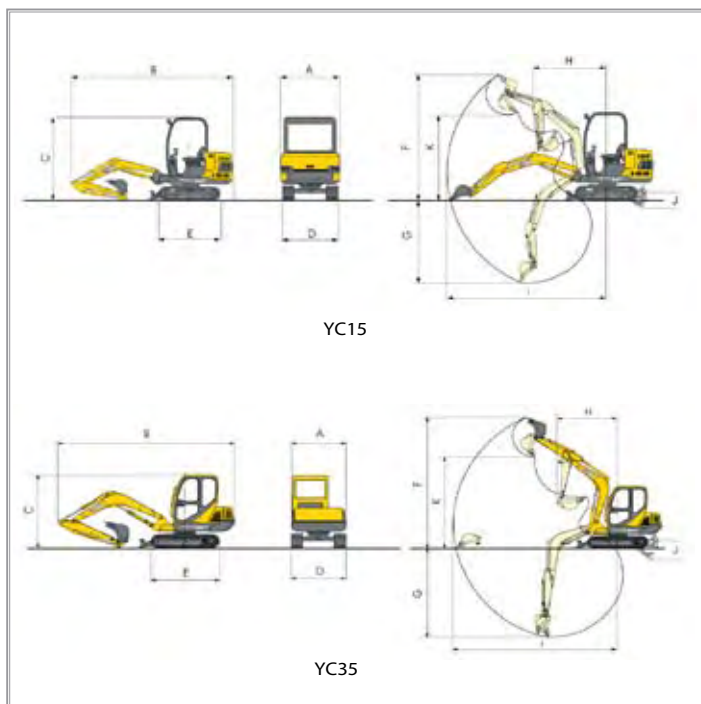


SKID STEER LOADER

Model	Jc45 skid steer loader	Jc60(h) skid steer loader
Engine		
Manufacturer	Chinese xinchai	Perkins mitsubishi japan
Gross horsepower, hp (kw)	50 (37)	63 (46)
Net horsepower, hp (kw)	47 (35)	60 (44)
Rated rpm	2500	2600
#Cylinders	4	4
Displacement, cuin(l)	2.91L	3.331L
Fuel capacity, gal (l)	50L	60L
Hydraulic pump		
System pressure, psi (kpa)	21000Kpa	25000Kpa
Drive train		
Standard tire size	10.0/75-15.3	12-16.5Nhs
Operating weight, Standard lb (kg)	2600	3000

CONSTRUCTION MACHINERY

YC15 / YC35



		YC15	YC35
DIMENSIONS	Width of Platform	A 1014mm	1494mm
	Maximun length of Transportation	B 3607mm	5250mm
	Machine Height	C 2195mm	2478mm
	Overall width	D 1080mm	2465mm
	Length of crawler	E 1625mm	1625mm
TECHNICAL PERFORMANCE AND SPECIFICATION	Power (Perkins/Kubota/Chinese Engine)	14.7Kw/14Kw/14.2Kw/2200rpm	32Kw/2200rpm
	Machine Weight	1500kgs(canopy)/1600kgs(cabin)	3700kgs
	Volume of Backhoe	0.04-0.07m ³	0.1-0.12m ³
	Hydraulic System Working Pressure	16Mpa	21Mpa
	Changeable Flowrate Pump		2x44L/min
	Constant Flowrate Pump	2x17.6+6.6L/min	13.2L/min
	Maximun Digging Force	10.5KN	22.19KN
	Gradeability	58%(30o)	58% (30°)
	Pressure to the Ground	27kpa(canopy)/29kpa(cabin)	31 kpa
	Walking Speed	2Km/h	2.4-4.3Km/h
	Maximun Hauling Force	11.6KN	27KN
	Swing Speed of Platform	10.12rpm	14.6rpm
	Swing Angularity of the digging Arm	L40° /45° /R68° /48°	L80° /R50°
RANGE OF OPERATION	Max digging height	F 2940mm	5209mm
	Maximum Digging Depth	G 1860mm	3530mm
	Maximum Platform Tail Tuming Radius	H 1180mm	1510mm
	Maximum Digging Radius	I 3490mm	5590mm
	Maximum Depth for Buldozing	J 137mm	457mm
	Maximum Dumping Height	K 2013mm	3689mm

907B

Main Specifications:

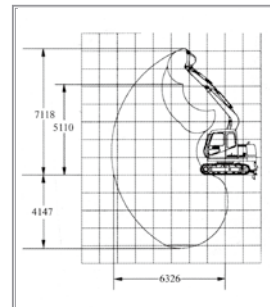
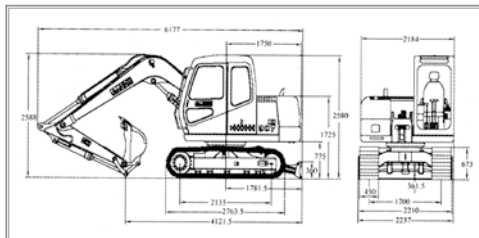
Operating Weight	7.1T
Stick	1.65m
Standard Bucket	0.32 m ³
Blade	0.36m×2.21m
Width of track shoes	450mm

Engine:

Model	CUMMINS B3.3
Type	4 cylinders, in line
Breath	Normal
Displacement	3.3L
Rated Power	45KW(60hp)/2200r/min
Throttle Control	Electric control
Fuel tank	175 L
Starter	12V/2.2KW

Working Scope:

Digging force of bucket cylinder	53.6KN
Digging force of stick cylinder	39.9KN
Digging width of bucket	820mm



913E

Main Specifications:

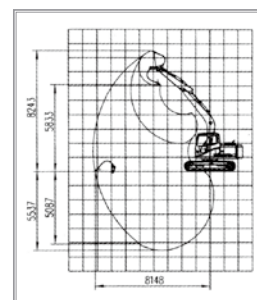
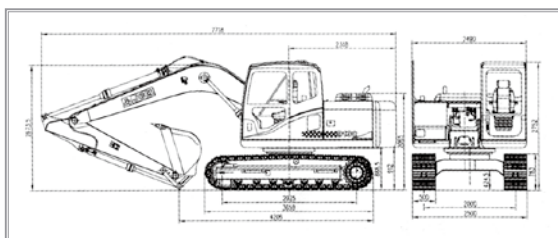
Operation weight	12.8T
Standard stick	2.5m
Standard bucket volume	0.65m ³
Blade (Optional)	0.59* 2.49M

Engine:

Model	CUMMINS 4BT3.9 (TIER II)
Rated power	86kw /2200rpm
Breath	turbo-charged, air cooled.
Quantity of cylinder	4
Displacement	3.9L
Starter	24V/4.5kw
Throttle control	hand/electric control

Working Scope:

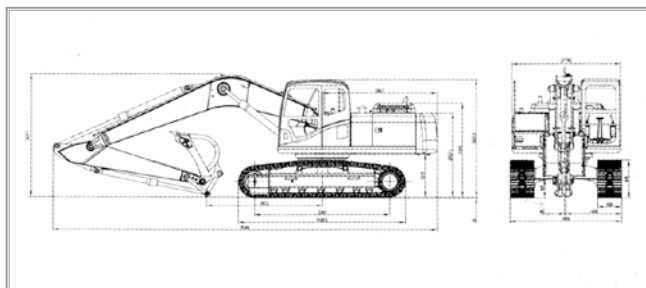
Digging force of bucket cylinder	82.3KN
Digging force of stick cylinder	62.1KN
Digging width of bucket	960mm



921C

Features:

1. The imported CUMMINS engine provides a powerful horsepower, and the maintenance is convenient.
2. Imported hydraulic parts, negative low & electric control, high priority, flux regeneration.
3. The new type full punching cabin is greatly punch-proof.
4. Applying the three-dimensional and finite analysis to the working device and the frame & under carriage makes sure of the high reliability.
5. Passed EU soft certification.

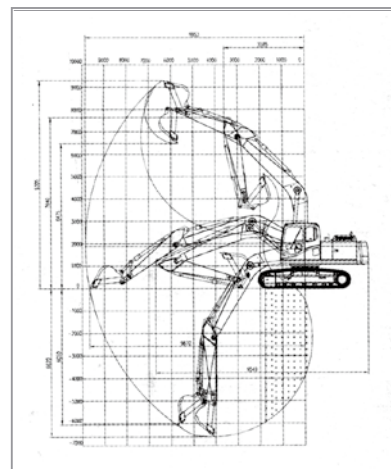


Main Specifications:

Operating weight ----- 20.5 T
 Standard stick ----- 2.92m
 Standard bucket volume ----- 0.9m³

Engine:

Model ----- CUMMINS 6B-5.9(TIER 2)
 Type ----- 6 cylinders, in line
 Breath ----- Turbo-charged, intergraded cooled
 Qty of cylinder ----- 6
 Rated Power ----- 112KW(150hp)/1950r/min
 Cooling ----- Water cooled
 Air filter ----- Dry air filter
 Throttle Control ----- Electric control
 Main valve ----- Imported from Korea
 Main pump ----- Imported from Korea
 Hydraulic operating valve ----- Korea
 Traveling motor and Reducer ---- Imported from Korea



Working Scope:

Digging force of bucket cylinder ----- 115KN
 Digging force of stick cylinder ----- 92.5KN
 Digging width of bucket ----- 1190mm



923C

Features:

1. The imported CUMMINS B series engines, a large horsepower, stable ability, high efficiency, low oil consumption noise and emission.
2. Large cabin, adjustable seat, air conditioner and advanced guiding control system. The imported hydraulic parts, negative flow & electric control and the functions of boom confluence & diffuence, swing priority have made the digging more efficient.
3. Imported hydraulic system and cylinders.
4. Multifunctional monitor, four working modes, two ways to control the throttle: hand and electric.

Main specifications:

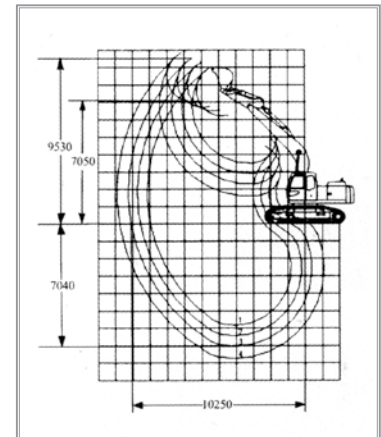
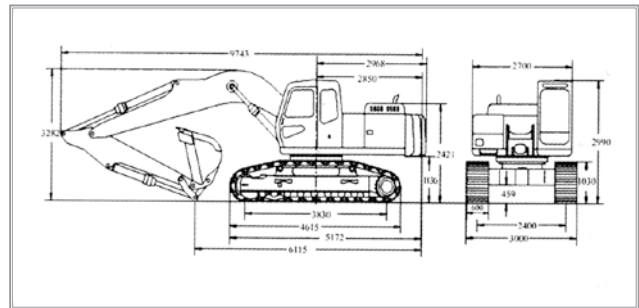
Operating weight ----- 24.5T
 Standard stick ----- 3.0M
 Standard Bucket Volume ----- 1.1M³

Engine:

Model ----- CUMMINS 6BTA5.9 (tier 2)
 Type ----- 6 cylinders, in line
 Breath --- turbo-charged and inter-grade cooled
 Rated power ----- 133kW (178hp) 2,000rpm
 Throttle control ----- electric control
 Fuel tank ----- 360L
 Starter ----- 24V/5.5kW

Working Scope:

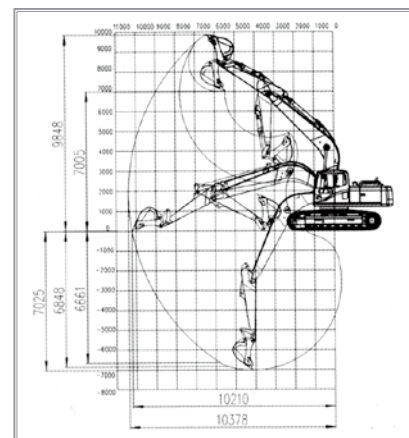
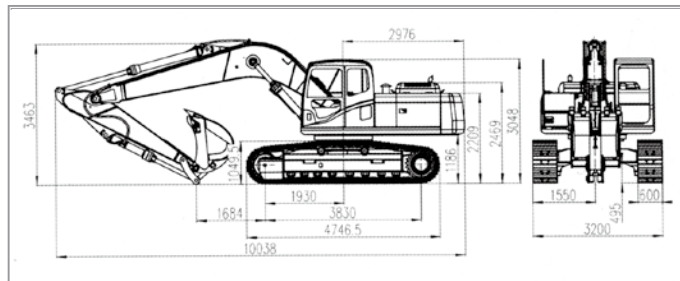
Digging force of bucket cylinder ----- 140KN
 Digging force of stick cylinder ----- 95KN
 Digging width of bucket ----- 1294mm



927F

Features:

1. The imported CUMMINS engine according with EU III standard emission, provide a powerful horsepower, and the maintenance is convenient.
2. Imported hydraulic parts, negative flow & electric control, high efficiency with the functions of boom confluence, flux regeneration.
3. The new type full-punching cabin is greatly punch-proof, support with damping vibration pad, absorb vibration effectively. It is comfortable when you work.
4. Applying the three-dimensional and finite analysis to the working device and the frame & under carriage makes sure of the high reliability.
5. It is equipped with the electrical control system of the 4th generation and GPS. It has many functions such as date transmission, long-distance diagnosis, long-distance monitoring etc.



Main Specifications:

Operation weight ----- 27.2T
 Standard stick ----- 3.0m
 Standard bucket volume ----- 1.35m³

Engine:

Model ----- CUMMINS QSB6.7 (tier 3)
 Rated power ----- 142kw /2200rpm
 Breath ----- turbo-charged, air cooled
 Cooling; water cooled
 Throttle control ----- electric control
 Qty of cylinder ----- 6
 Displacement ----- 6.7L
 Fuel tank ----- 360L
 Starter ----- 24V/7.5KW

Working Scope:

Digging force of bucket cylinder ----- 139KN
 Digging force of stick cylinder ----- 122KN
 Digging width of bucket ----- 1324mm



450LC-8



Type			450LC-8
Rated bucket capacity		m ³	1.9
Operating weight		kg	44800
Dimension (In transportation)	Overall length	mm	11576
	Overall width	mm	3350
	Overall height	mm	3800
	Min. ground clearance	mm	526
	Track shoe width	mm	600
Engine	Model		ISUZU AA-6WG1T
	Rated output	Hp (kW)	320 (235.4)
	Rated speed	r/min	1800
	Displacement	L	15.681
	Fuel tank	L	650

330LC-8



Type			330LC-8
Rated bucket capacity		m ³	1.45
Operating weight		kg	33100
Dimension (In transportation)	Overall length	mm	10698
	Overall width	mm	3200
	Overall height	mm	3083
	Min. ground clearance	mm	500
	Track shoe width	mm	600
Engine	Model		ISUZU AA-6HKIXQA-S
	Rated output	Hp (kW)	185.4
	Rated speed	r/min	2000

Other Machineries Can be Supplied



Multi-function Asphalt Paver



Motor Grader



Vibratory Roller



Bulldozer



Forklift



Pneumatic Roller

